

**TECHNICAL MANUAL**

**ORGANIZATIONAL DIRECT SUPPORT, AND**

**GENERAL SUPPORT**

**MAINTENANCE REPAIR PARTS AND**

**SPECIAL TOOLS LIST**

**(INCLUDING DEPOT MAINTENANCE REPAIR**

**PARTS AND SPECIAL TOOLS)**

**FOR**

**SIGNAL GENERATOR SG-1112(V)2/U**

**(NSN 6625-00-500-6525)**



TECHNICAL MANUAL }  
 NO. 11-6625-2780-24P-1 }

HEADQUARTERS  
 DEPARTMENT OF THE ARMY,  
 WASHINGTON, DC, 7 November 1983

**ORGANIZATIONAL, DIRECT SUPPORT, AND GENERAL SUPPORT  
 MAINTENANCE REPAIR PARTS AND SPECIAL TOOLS LIST  
 (INCLUDING DEPOT MAINTENANCE REPAIR  
 PARTS AND SPECIAL TOOLS)  
 FOR  
 SIGNAL GENERATOR SG-1112(V)2/U  
 (NSN 6625-00-500-6525)**

Current as of 27 July 1983

**REPORTING ERRORS AND RECOMMENDING IMPROVEMENTS**  
 You can help improve this manual. If you find any mistakes or if you know of a way to improve the procedures, please let us know. Mail your letter, DA Form 2028 (Recommended Changes to Publications and Blank Forms), Or DA Form 2028-2 located in the back of this manual direct to: Commander, US Army Communications-Electronics Command and Fort Monmouth, ATTN: DR-SEL-ME-MP, Fort Monmouth, NJ 07703.  
 In either case, a reply will be furnished direct to you.

**Table of Contents**

	Page	Illus Figure
SECTION I. Introduction.....	1	
SECTION II. Repair Parts List.....	5	
GROUP 00 Signal Generator, SG-1112(V)2/U.....	5	1
01 Oscillator Assembly (A3).....	11	2
02 Counter Assembly (A8).....	13	3
03 Switch Assembly (A9).....	17	4
04 Electronic Component Assembly (A10).....	19	5
0401 Filter Assembly (A10A1).....	23	6
0402 Circuit Card Assembly (A10A2).....	29	7
05 Circuit Card Assembly (A11).....	35	8
06 Electronic Component Assembly (A13).....	41	9
07 Circuit Card Assembly (A15).....	43	10
08 Radio Frequency Amplifier Assembly (A26).....	45	11
SECTION III. Special Tools List (Not applicable)		
SECTION IV. National Stock Number and Part Number Index.....	47	



# SECTION I

## INTRODUCTION

### 1. Scope

This manual lists spares and repair parts; special tools; special test, measurement, and diagnostic equipment (TMDE), and other special support equipment required for performance of organizational, direct support, and general support maintenance of the SG-1112(V)2/U. It authorizes the requisitioning and issue of spares and repair parts as indicated by the source and maintenance codes. -

### 2. General

This Repair Parts and Special Tools List is divided into the following sections:

*a. Section II. Repair Parts List.* A list of spares and repair parts authorized for use in the performance of maintenance. The list also includes parts which must be removed for replacement of the authorized parts. Parts lists are composed of functional groups in numeric sequence, with the parts in each group listed in figure and item number sequence.

*b. Section III. Special Tools List.* Not applicable.

*c. Section IV. National Stock Number and Part Number Index.* A list, in National item identification number (NIIN) sequence, of all National stock numbers (NSN) appearing in the listings, followed by a list, in alphameric sequence, of all part numbers appearing in the listings. National stock numbers and part numbers are cross-referenced to each illustration figure and item number appearance.

### 3. Explanation of Columns

*a. Illustration.* This column is divided as follows:

(1) *Figure number.* Indicates the figure number of the illustration on which the item is shown,

(2) *Item number.* The number used to identify item called out in the illustration.

*b. Source, Maintenance, and Recoverability (SMR) Codes.*

(1) *Source code.* Source codes indicate the manner of acquiring support items for maintenance, repair, or overhaul of end items. Source codes are entered in the first and second positions of the Uniform SMR Code format as follows:

<i>Code</i>	<i>Definition</i>
PA-	Item procured and stocked for anticipated or known usage.

<i>Code</i>	<i>Definition</i>
PE-	Support equipment procured and stocked for initial issue or outfitting to specified maintenance repair activities.
PG-	Item procured or stocked to provide for sustained support for the life of the equipment. It is applied to an item peculiar to the equipment which, because of probable discontinuance or shutdown of production facilities, would prove uneconomical to reproduce at a later time.
XA-	Item is not procured or stocked because the requirements for the item will result in the replacement of the next higher assembly.
XB-	Item is not procured or stocked. If not available through salvage, requisition.
XD-	A support item that is not stocked. When required, item will be procured through normal supply channels.

#### NOTE

Cannibalization or salvage maybe used as a source of supply for any items source coded above except those coded XA and aircraft support items as restricted by AR 750-1.

(2) *Maintenance code.* Maintenance codes are assigned to indicate the levels of maintenance authorized to USE and REPAIR support items. The maintenance codes are entered in the third and fourth positions of the Uniform SMR Code format as follows:

(a) The maintenance code entered in the third position will indicate the lowest maintenance level authorized to remove, replace, and use the support item. The maintenance code entered in the third position will indicate one of the following levels of maintenance:

<i>Code</i>	<i>Application/Explanation</i>
O-	Support item is removed, replaced, used at the organizational level.
H-	Support item is removed, replaced, used at the general support level.

(b) The maintenance code entered in the fourth positions indicates whether the item is to be repaired and identifies the lowest maintenance level with the

capability to perform complete repair (i.e., all authorized maintenance functions). This position will contain one of the following maintenance codes:

<i>Code</i>	<i>Application/Explanation</i>
H—	The lowest maintenance level capable of complete repair of the support item is the general support level.
Z—	Nonreparable. No repair is authorized.

(3) *Recoverability code.* Recoverability codes are assigned to support items to indicate the disposition action on unserviceable items. The recoverability code is entered in the fifth position of the Uniform SMR Code format as follows:

<i>Recoverability codes</i>	<i>Definition</i>
Z—	Nonreparable item. When unserviceable, condemn and dispose at the level indicated in position 3.
H —	Reparable item. When uneconomically reparable, condemn and dispose at the general support level.

*c. National Stock Number.* Indicates the National stock number assigned to the item and will be used for requisitioning purposes,

*d. Federal Supply Code for Manufacturer (FSCM).* The FSCM is a 5-digit numeric code listed in SB 708-41/42 which is used to identify the manufacturer, distributor, or Government agency, etc.

*e. Part Number.* Indicates the primary number used by the manufacturer (individual, company, firm, corporation, or Government activity), which controls the design and characteristics of the item by means of its engineering drawings, specifications, standards, and inspection requirements to identify an item or range of items.

**NOTE**

When a stock numbered item is requisitioned, the repair part received may have a different part number than the part being replaced,

*f. Description.* Indicates the Federal item name and, if required, a minimum description to identify the item.

*g. Unit of Measure (U/M).* Indicates the standard of the basic quantity of the listed item as used in performing the actual maintenance function. This measure is expressed by a two-character alphabetical abbreviation (e.g., ea, in, pr, etc). When the unit of measure differs from the unit of issue, the lowest unit of issue that will satisfy the required units of mea-

sure will be requisitioned.

*h. Quantity Incorporated in Unit.* Indicates the quantity of the item used in the breakout shown on the illustration figure, which is prepared for a functional group, subfunctional group, or an assembly.

**4. Special Information**

*a.* The following publication pertains to the SG-1112(V)2/U and its components:

- TM 11-6625-2780-14&P, Signal Generators SG-1112(V)1/U and SG-1112(V)2/U
- TM 11-6625-2780-24P, Signal Generator SG-1112(V)1/U

*b.* National stock numbers (NSN's) that are missing from P source coded items have been applied for and will be added to this TM by future change/revision when they are entered in the Army Master Data File (AMDF). Until the NSN's are established and published, submit exception requisitions to Commander, US Army Communications-Electronics Command and Fort Monmouth, ATTN: DR-SEL-MM, Fort Monmouth, NJ 07703 for the part required to support your equipment.

**5. How to Locate Repair Parts**

*a.* When National stock number or part number is unknown.

(1) *First.* Using the table of contents, determine the functional group within which the item belongs. This is necessary since illustrations are prepared for functional groups and listings are divided into the same groups.

(2) *Second.* Find the illustration covering the functional group to which the item belongs.

(3) *Third.* Identify the item on the illustration and note the illustration figure and item number of the item.

(4) *Fourth.* Using the Repair Parts Listing, find the figure and item number noted on the illustration.

*b.* When National stock number or part number is known.

(1) *First.* Using the index of National Stock Numbers and Part Numbers, find the pertinent National stock number or part number. This index is in NIIN sequence followed by a list of part numbers in alphameric sequence, cross-referenced to the illustration figure number and item number.

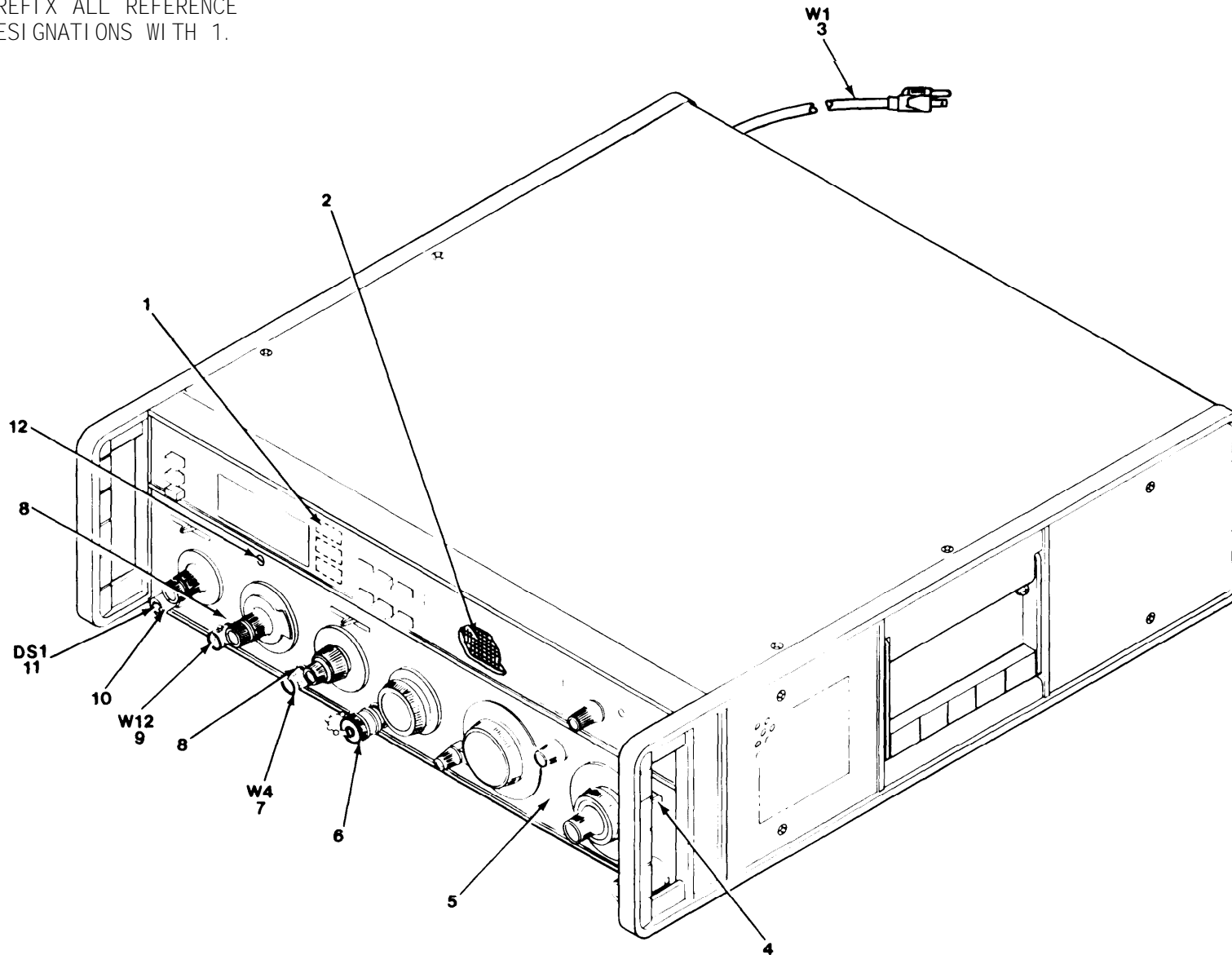
(2) *Second.* After finding the figure and item number, locate the figure and item number in the repair parts list.

**6. Abbreviations**

Not applicable.

(Next printed page is 4.1)

PREFIX ALL REFERENCE  
DESIGNATIONS WITH 1.

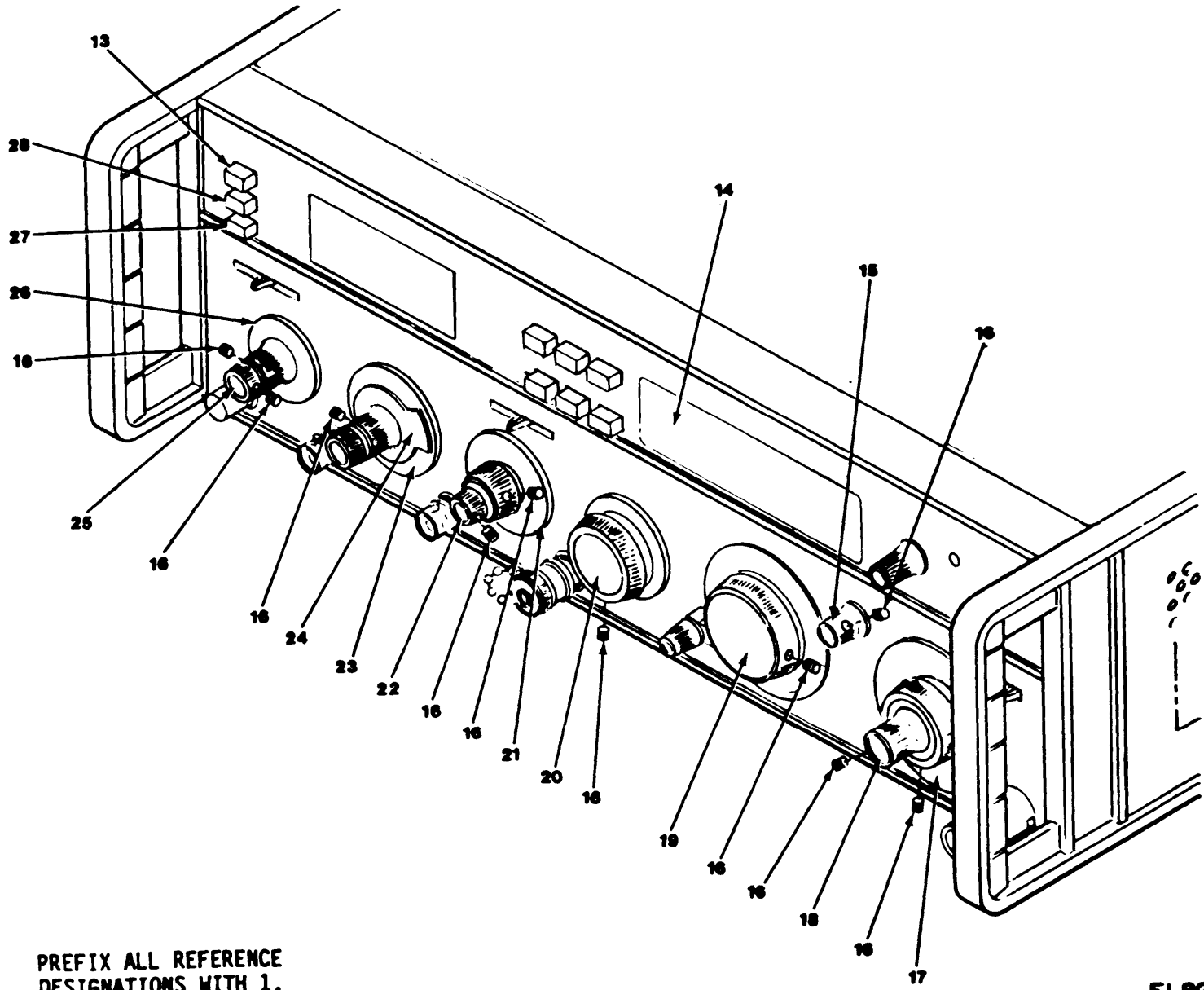


TM11-6625-2780-24P-1

EL8GZ001

Figure 1. Signal Generator, SG-1112(V)2/U (Sheet 1 of 8)

4.2



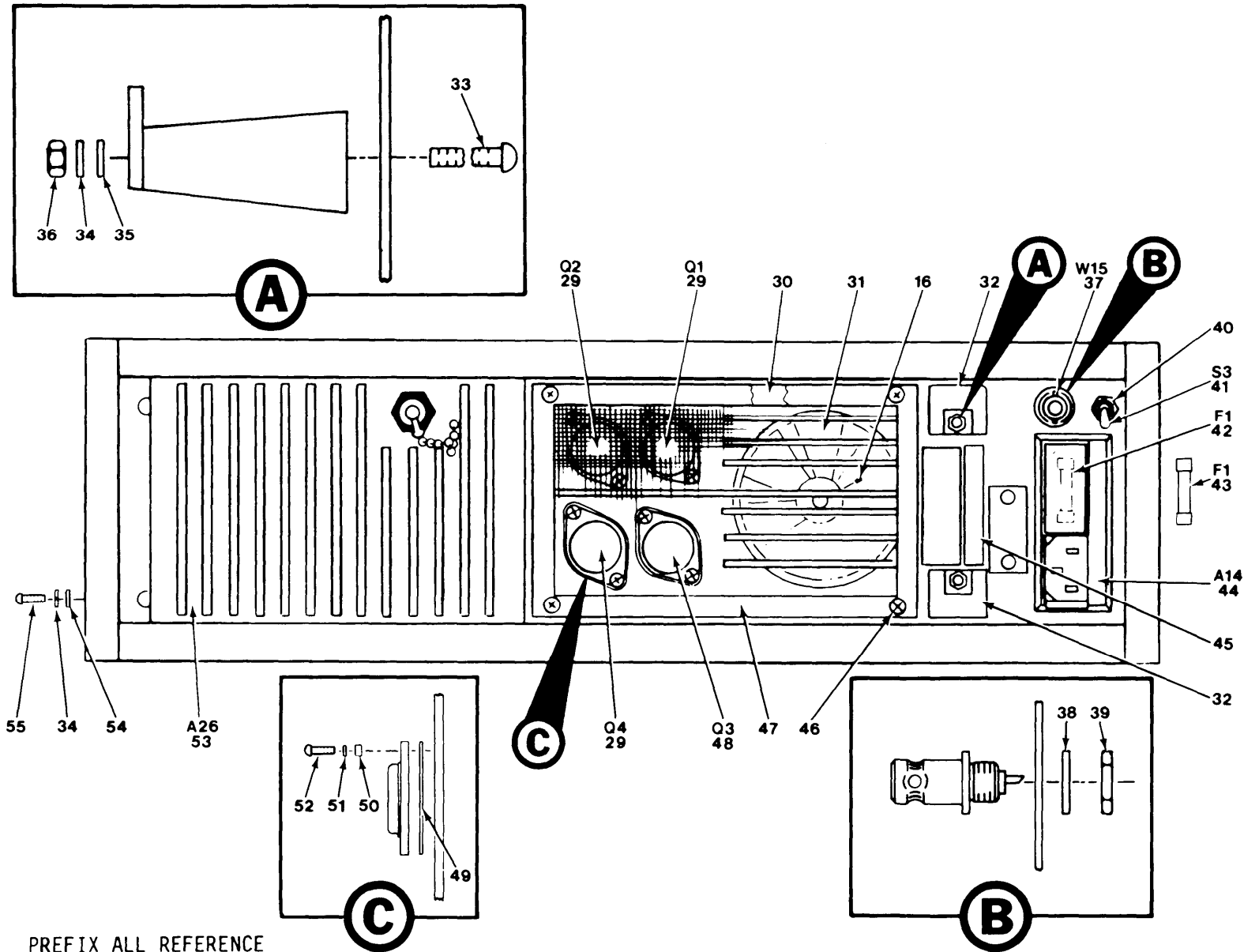
TM 11-6625-2780-24P-1

PREFIX ALL REFERENCE DESIGNATIONS WITH 1.

EL8G2002

Figure 1. Signal Generator, SG-1112(V)2/U (Sheet 2 of 8)





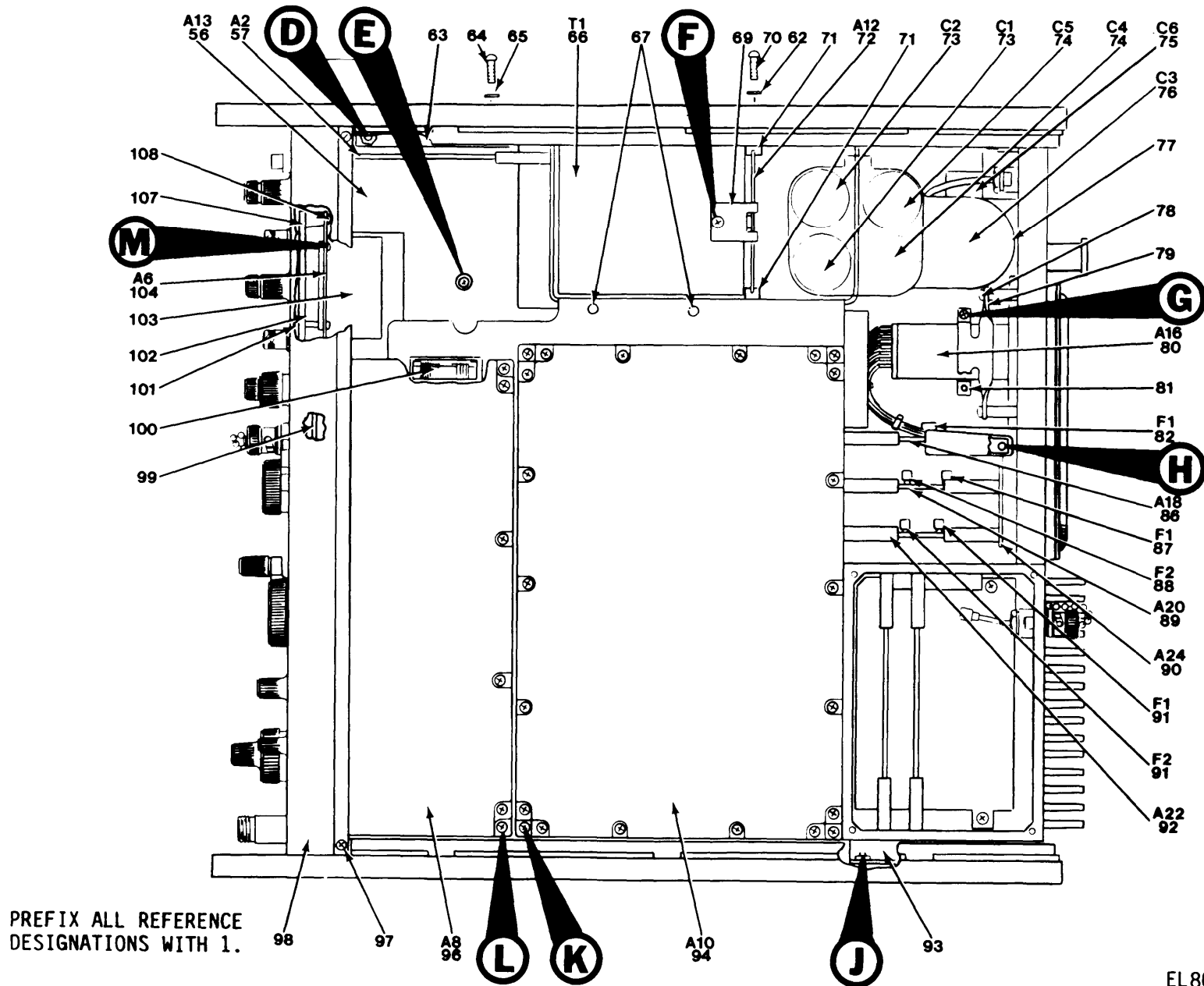
TM11-6625-2780-24P-1

PREFIX ALL REFERENCE DESIGNATIONS WITH 1.

EL8GZ003

Figure 1. Signal Generator, SG-1112(V)2/U (Sheet 3 of 8)

4.4

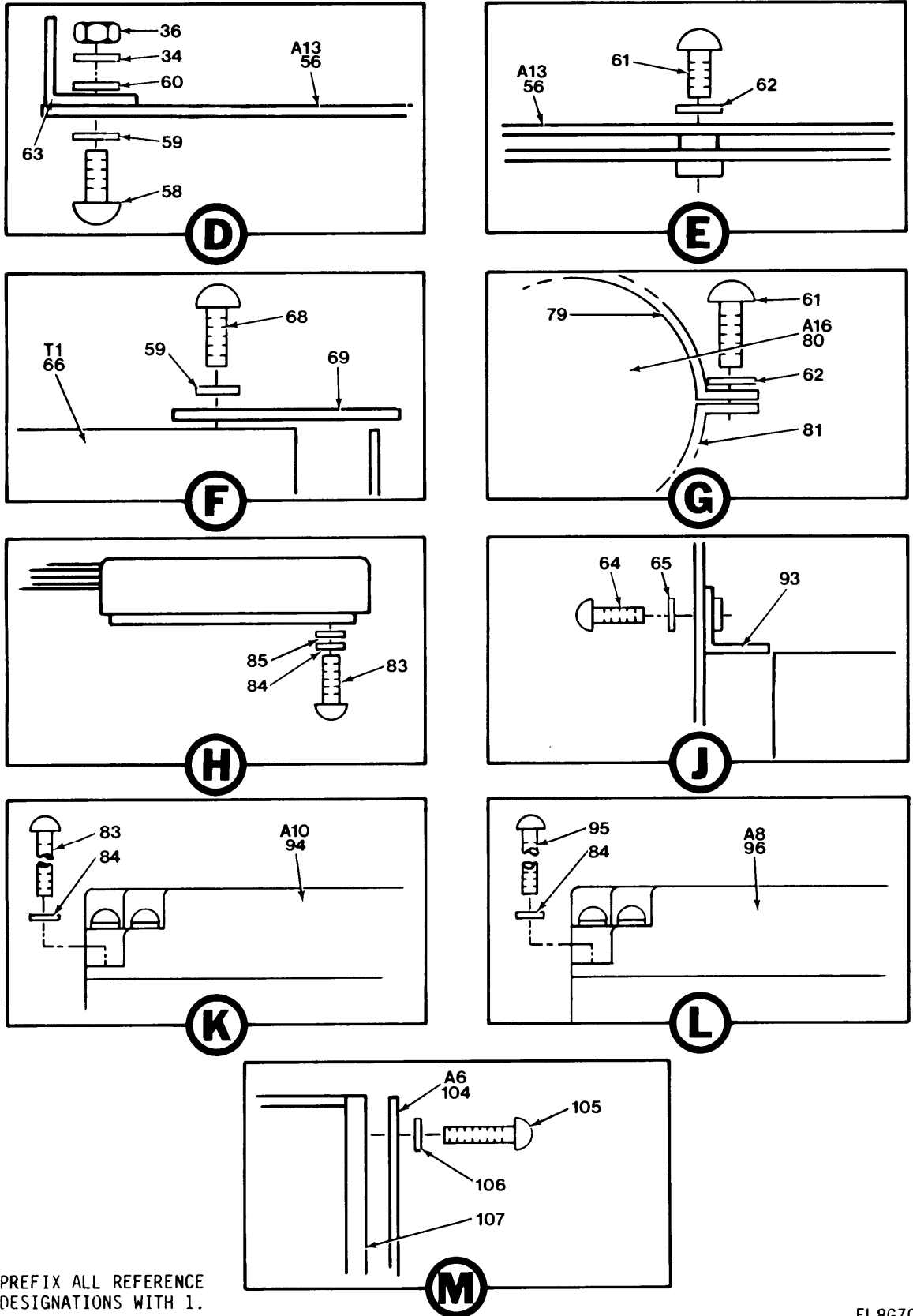


PREFIX ALL REFERENCE DESIGNATIONS WITH 1.

TM11-6625-2780-24P-1

EL8GZ004

Figure 1. Signal Generator, SG-1112(V)2/U (Sheet 4 of 8)



PREFIX ALL REFERENCE DESIGNATIONS WITH 1.

EL8GZ024

Figure 1. Signal Generator, SG-II 12(V) 2/U (Sheet 5 of 8)

4.6

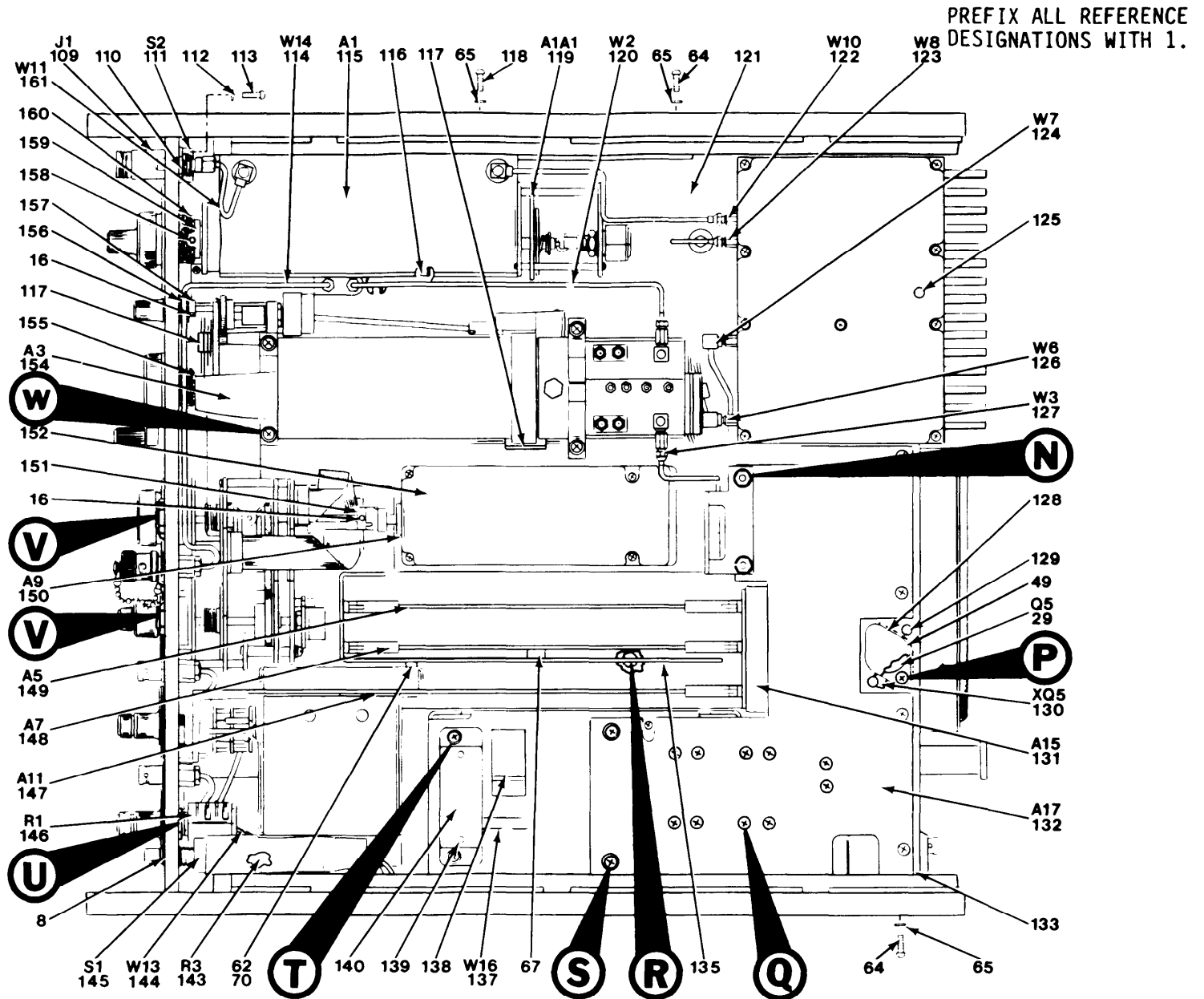
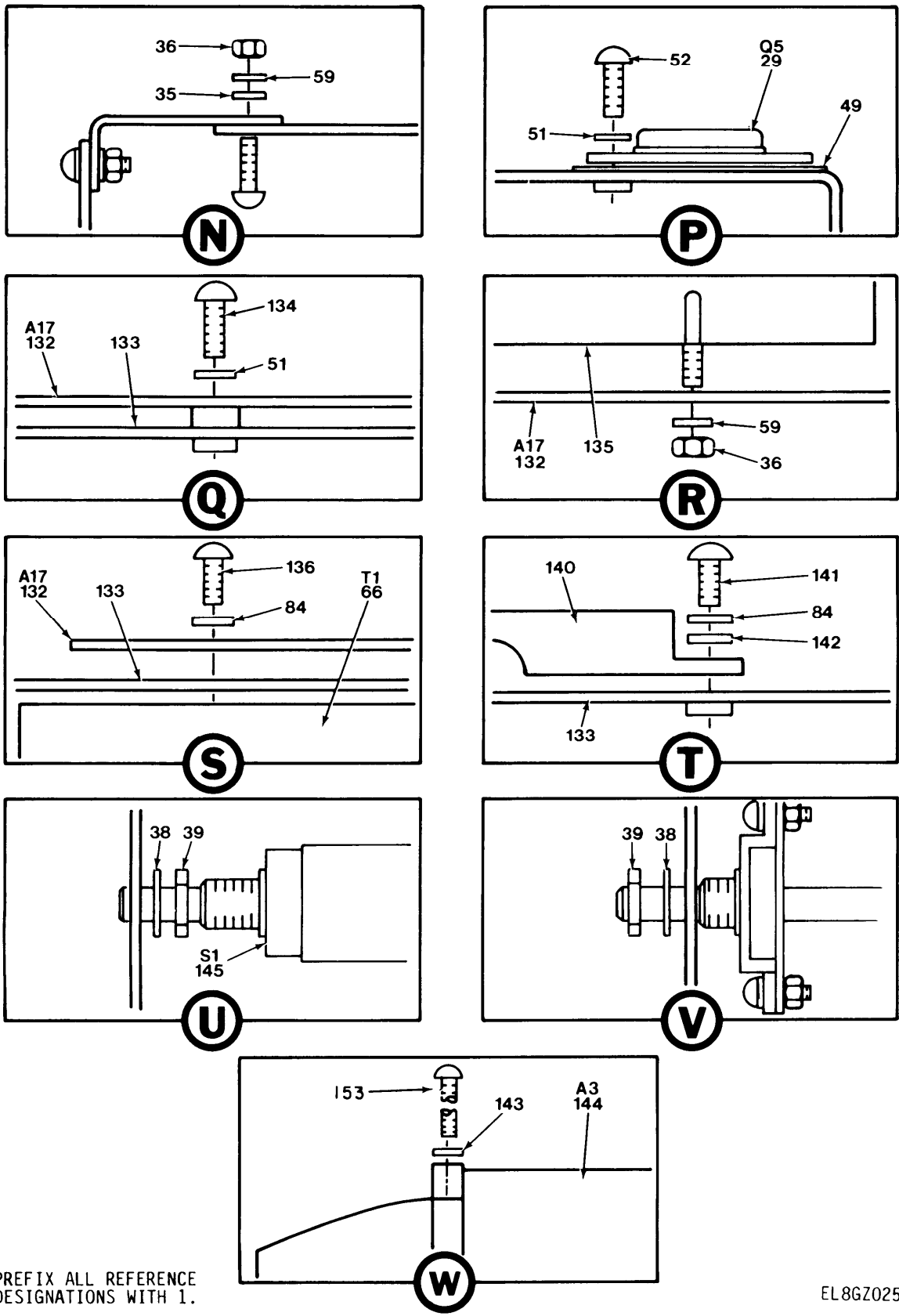


Figure 1. Signal Generator, SG-112(V)2/U (Sheet 6 of 8)

EL8GZ005

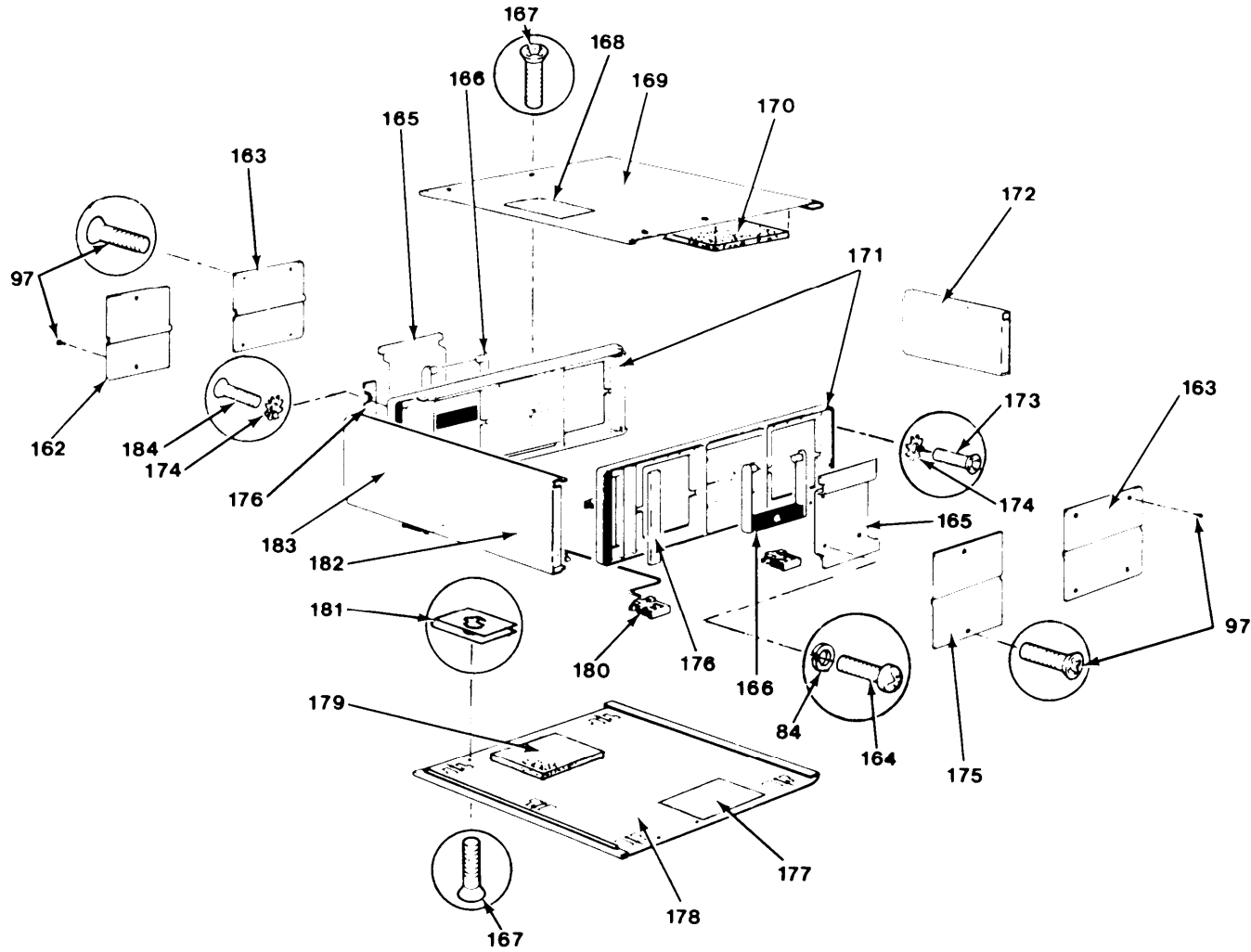


PREFIX ALL REFERENCE DESIGNATIONS WITH 1.

EL8GZ025

Figure 1. Signal Generator, SG-1112(V)2/U (Sheet 7 of 8)

PREFIX ALL REFERENCE  
DESIGNATIONS WITH 1.



4.8

TM11-6625-2780-24P-1

EL8GZ006

Figure 1. Signal Generator, SG-1112(V)2/U (Sheet 8 of 8)

(1) ILLUSTRATION		(2)	(3)	(4)	(5)	(6)	(7)	(8)
(a) FIG NO	(b) ITEM NO	SMR CODE	NATIONAL STOCK NUMBER	FSCM	PART NUMBER	DESCRIPTION	USABLE ON CODE	QTY INC IN UNIT
GROUP 00 GENERATOR, SIGNAL SG-1112(V)2/U								
1	1	PAHZZ		28480	08640-40046	LENS, DIFUSING.....	EA	3
1	2	PAHZZ		28480	08640-20285	SHIELD, TEST.....	EA	1
1	3	PAHZZ	6150-00-008-5075	16428	KH7081	CABLE ASSEMBLY, POWE.....	EA	1
1	4	PAHZZ		28480	08640-40052	SWITCH, LEVER.....	EA	1
1	5	XBHZZ		28480	08640-00107	PANEL, FRONT.....	EA	1
1	6	PAHZZ		28480	1250-1471	COVER, ELECTRICAL CO.....	EA	1
1	7	PAHZZ		28480	08640-60180	CABLE ASSEMBLY, RADI.....	EA	1
1	8	PAHZZ		28480	0590-1011	NUT.....	EA	1
1	9	PAHZZ		28480	08640-60128	CABLE ASSEMBLY, RADI.....	EA	1
1	10	PAHZZ		76854	67250-121	PUSH BUTTON.....	EA	1
1	11	PAOZZ		80204	AIH	LAMP, GLOW.....	EA	1
1	12	PAHZZ		28480	08640-40044	SCREW.....	EA	1
1	13	PAHZZ		28480	5040-0388	PUSH BUTTON.....	EA	1
1	14	PAHZZ		28480	08640-20312	WINDOW, OBSERVATION.....	EA	1
1	15	PAOZZ		28480	0370-2623	KNOB.....	EA	1
1	16	PAOZZ	5305-00-717-6950	96906	MS51963-9	SET SCREW.....	EA	2
1	17	PAHZZ		28480	0370-2916	DIAL, CONTROL.....	EA	1
1	18	PAOZZ		28480	0370-2445	KNOB.....	EA	1
1	19	PAOZZ		28480	08640-40055	KNOB AND SKIRT.....	EA	1
1	20	PAOZZ		28480	0370-3037	KNOB.....	EA	1
1	21	PAOZZ		28480	0370-3035	KNOB.....	EA	1
1	22	PAOZZ		28480	0370-2378	KNOB.....	EA	1
1	23	PAHZZ		28480	08640-20296	GEAR ASSEMBLY, DIAL.....	EA	1
1	24	PAHZZ		28480	08640-40047	DIAL, CONTROL.....	EA	1
1	25	PAOZZ		28480	0370-2379	KNOB.....	EA	1
1	26	PAHZZ		28480	0370-2381	DIAL, CONTROL.....	EA	1
1	27	PAHZZ		28480	5040-0390	PUSH BUTTON.....	EA	1
1	28	PAHZZ		28480	5040-0389	PUSH BUTTON.....	EA	1
1	29	PAHZZ	5961-00-199-6008	81349	JAN2N3055	TRANSISTOR.....	EA	4
1	30	PAHZZ		28480	08620-20016	HEAT SINK, ELEC.....	EA	1
1	31	PAHZZ		04870	3LH8079S	BLADE, FAN.....	EA	1
1	32	PAHZZ	5340-00-494-7440	28480	5040-0447	BUMPER, PLASTIC.....	EA	2
1	33	PAHZZ	5305-00-719-5064	96906	MS51959-30	SCREW, MACHINE.....	EA	2
1	34	PAHZZ	5310-00-929-6395	96906	MS35338-136	WASHER, LOCK.....	EA	2
1	35	PAHZZ	5310-00-880-5976	96906	MS15795-806	WASHER, FLAT.....	EA	2
1	36	PAHZZ	5310-00-934-9761	96906	MS35649-264	NUT, PLAIN, HEXAGON.....	EA	2
1	37	PAHZZ		28480	08640-60124	CABLE ASSEMBLY, RADI.....	EA	1
1	38	PAHZZ	5310-00-022-8847	96906	MS35333-110	WASHER, LOCK.....	EA	1
1	39	XBHZZ		73743	28200-10-101	NUT, PLAIN, HEX.....	EA	1

(1) ILLUSTRATION		(2)	(3)	(4)	(5)	(6) DESCRIPTION	(7)	(8)
(a) FIG NO	(b) ITEM NO	SMR CODE	NATIONAL STOCK NUMBER	FSCM	PART NUMBER	USABLE ON CODE	J M	QTY INC IN UNIT
1	40	PAHZZ	5310-00-460-3056	82389	410C507	NUT,PLAIN,HEXAGON.....	EA	1
1	41	PAHZZ		09353	Z11	SWITCH,TOGGLE.....	EA	1
1	42	PAOZZ	5920-00-280-4960	81349	F02A250V2A	FUSE,CARTRIDGE.....	EA	1
1	43	PAOZZ		75915	3121-25	FUSE,CARTRIDGE.....	EA	1
1	44	PAHZZ		05245	F2058	PRINTED CIRCUIT BOA.....	EA	1
1	45	XBHZZ		28480	7120-7032	PLATE, INSTR.....	EA	1
1	46	PAHZZ		28480	0624-0078	SCREW,THREAD FORMIN.....	EA	4
1	47	PAOZZ	4130-00-095-3666	28480	3150-0203	FILTER ELEMENT,AIR.....	EA	1
1	48	PAHZZ	5961-00-577-0557	28480	1854-0250	TRANSISTOR.....	EA	1
1	49	PAHZZ	5999-00-004-7688	76530	322047	HEAT SINK,ELECTRICA.....	EA	5
1	50	PAHZZ		28480	08640-20057	INSULATOR.....	EA	8
1	51	PAHZZ	5310-00-019-0672	96906	MS35333-107	WASHER,LOCK.....	EA	4
1	52	PAHZZ		28480	0624-0267	SCREW.....	EA	8
1	53	PAHHH		28480	08640-60318	AMPLIFIER,RADIO FRE.....	EA	1
1	54	PAHZZ	5310-00-616-3555	96906	MS35333-71	WASHER,LOCK.....	EA	6
1	55	PAHZZ	5305-00-978-9348	96906	MS16997-20	SCREW,CAP, SOCKET HE.....	EA	6
1	56	PAHHH		28480	08640-60300	ELECTRONIC COMPONEN.....	EA	1
1	57	PAHZZ		28480	08640-60304	CIRCUIT CARD ASSEMB.....	EA	1
1	58	PAHZZ	5305-00-054-6654	96906	MS51957-30	SCREW,MACHINE.....	EA	2
1	59	PAHZZ	5310-00-616-3554	96906	MS35335-29	WASHER,LOCK.....	EA	1
1	60	PAHZZ	5310-00-983-8483	96906	MS27183-5	WASHER,FLAT.....	EA	2
1	61	PAHZZ	5305-00-054-5448	96906	MS51957-14	SCREW,MACHINE.....	EA	6
1	62	PAHZZ	5310-00-058-3599	96906	MS35335-57	WASHER,LOCK.....	EA	2
1	63	XBHZZ		28480	08640-00022	SUPPORT,BOARD.....	EA	1
1	64	PAHZZ	5305-00-763-6962	96906	MS51959-27	SCREW,MACHINE.....	EA	2
1	65	PAHZZ	5310-00-550-0284	96906	MS35336-9	WASHER,LOCK.....	EA	2
1	66	PAHZZ		28480	9100-4024	TRANSFORMER,POWER.....	EA	1
1	67	PAHZZ	5340-00-466-1730	28480	0403-0026	GLIDE,SPECIAL.....	EA	3
1	68	PAHZZ	5305-00-054-6651	96906	MS51957-27	SCREW,MACHINE.....	EA	1
1	69	XBHZZ		28480	08640-00138	RETAINER,CKT CD.....	EA	1
1	70	PAHZZ	5305-00-054-5669	96906	MS51957-15	SCREW,MACHINE.....	EA	2
1	71	PAHZZ	6625-00-911-7214	28480	5040-0170	SUPPORT,MOUNTING.....	EA	2
1	72	PAHZZ	6625-00-521-2597	28480	08640-60326	CIRCUIT CARD ASSEMB.....	EA	1
1	73	PAHZZ		56289	360392F050AC2B	CAP,FXD,ELCTLT.....	EA	2
1	74	PAHZZ	5910-00-127-1848	13499	183-1278-450	CAPACITOR,FIXED,ELE.....	EA	2
1	75	PAHZZ	5910-01-027-9496	28480	0160-4048	CAPACITOR,FIXED,MET.....	EA	1
1	76	PAHZZ		56289	360392F075B82B	CAP,FXD,ELCTLT.....	EA	1
1	77	XBHZZ		28480	4040-0976	COVER,CAPACITOR.....	EA	1
1	78	PAHZZ		28480	0624-0206	SCREW.....	EA	2
1	79	XBHZZ		28480	08640-00072	BRACKET,FAN, TOP.....	EA	1

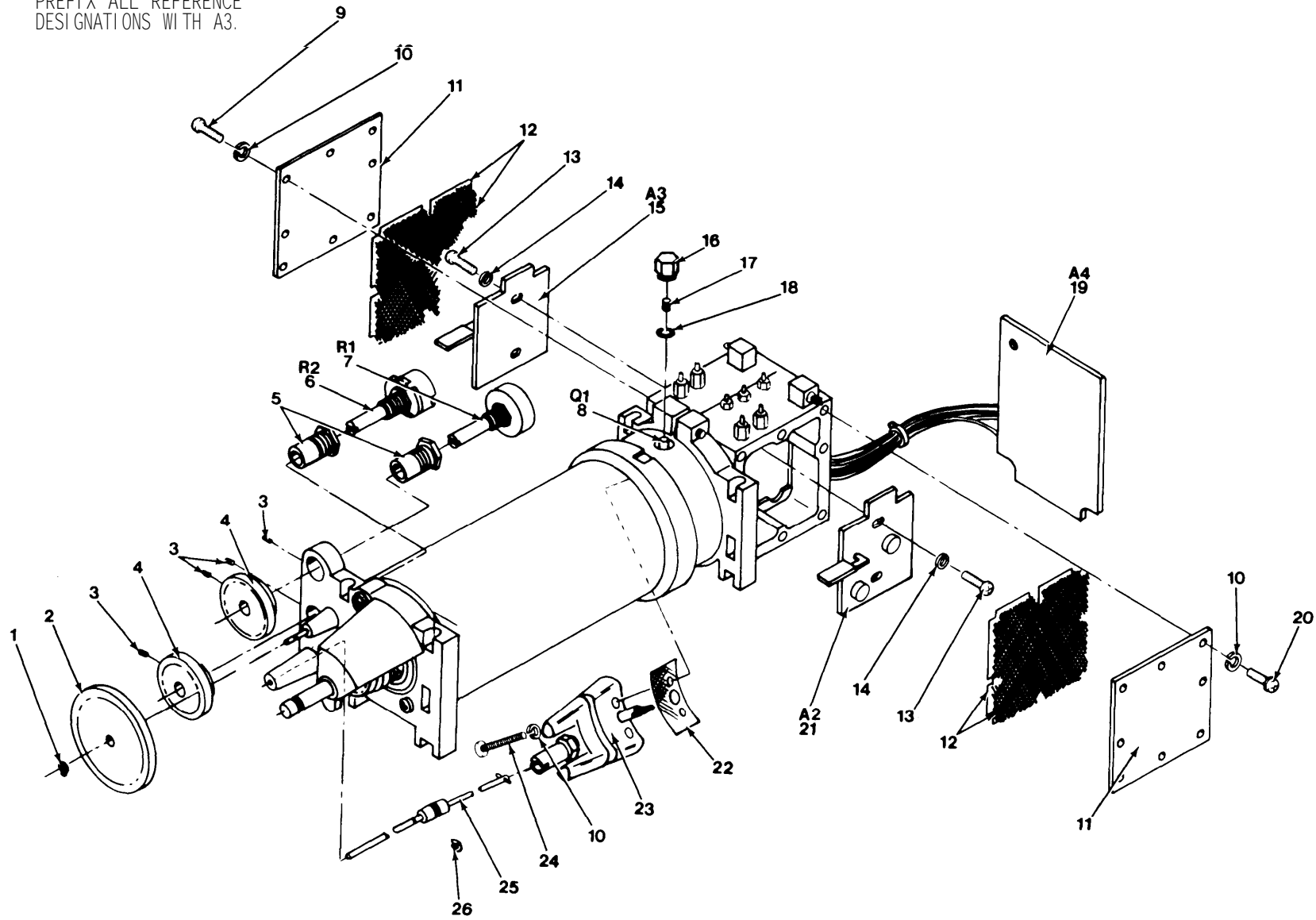


(1) ILLUSTRATION		(2)	(3)	(4)	(5)	(6)	(7)	(8)
(a) FIG NO	(b) ITEM NO	SMR CODE	NATIONAL STOCK NUMBER	FSCM	PART NUMBER	DESCRIPTION	UN	QTY INC IN UNIT
						USABLE ON CODE		
1	80	PAHZZ		28480	08640-60119	MOTOR ASSEMBLY SPEC.....	EA	1
1	81	XBHZZ		28480	08640-00073	BRACKET, FAN, BOT.....	EA	1
1	82	PAQZZ	5920-00-054-0173	81349	F M01A125V 2A	FUSE, CARTRIDGE.....	EA	1
1	83	PAHZZ		96906	MS51957-17	SCREW, MACHINE.....	EA	4
1	84	PAHZZ	53100-00-655-9505	96906	MS35340-40	WASHER, LOCK.....	EA	2
1	85	XDHZZ		28480	3050-0105	WASHER, FLAT.....	EA	2
1	86	PAHZZ	6625-00-528-8978	28480	08640-60004	CIRCUIT CARD ASSEMB.....	EA	1
1	87	PAQZZ	5920-00-777-6473	81349	F M01-125V-3A	FUSE, CARTRIDGE.....	EA	1
1	88	PAQZZ	5920-00-901-9938	71400	GMM1	FUSE, CARTRIDGE.....	EA	1
1	89	PAHZZ	6625-00-521-2598	28480	08640-60005	CIRCUIT CARD ASSEMB.....	EA	1
1	90	PAHZZ	6625-00-521-2600	28480	08640-60007	CIRCUIT CARD ASSEMB.....	EA	1
1	91	PAQZZ	5920-00-901-7419	81349	F M01-125V3-4A	FUSE, CARTRIDGE.....	EA	2
1	92	PAHZZ	6625-00-521-2599	28480	08640-60177	CIRCUIT CARD ASSEMB.....	EA	1
1	93	XBHZZ		28480	08640-00030	SUPPORT, MOD.....	EA	1
1	94	PAHHH		28480	08640-60105	ELECTRONIC COMPONEN.....	EA	1
1	95	PAHZZ	5305-00-400-8531	96906	MS51957-121	SCREW, MACHINE.....	EA	4
1	96	PAHHH		28480	08640-60321	COUNTER, ELECTRONIC.....	EA	1
1	97	PAHZZ	5305-00-066-7326	96906	MS24693C24	SCREW, MACHINE.....	EA	2
1	98	PAHZZ		28480	08640-20078	EXTRUSION TOP.....	EA	1
1	99	PAHZZ		28480	08640-00058	INSULATOR.....	EA	1
1	100	PAHZZ	5935-00-004-6303	28480	5060-0109	CONNECTOR, ELECTRICA.....	EA	1
1	101	PAHZZ	5305-00-770-2579	96906	MS51959-15	SCREW, MACHINE.....	EA	2
1	102	XBHZZ		28480	08640-40016	CLAMP, METER.....	EA	1
1	103	PAHZZ		28480	1120-0539	METER.....	EA	1
1	104	PAHZZ		28480	08640-60328	CIRCUIT CARD ASSEMB.....	EA	1
1	105	PAHZZ	5305-00-054-5653	96906	MS51957-19	SCREW, MACHINE.....	EA	2
1	106	PAHZZ	5310-00-543-2410	96906	MS35338-40	WASHER, LOCK.....	EA	2
1	107	PAHZZ		28480	08640-40054	SUPPORT, METER.....	EA	1
1	108	PAHZZ	5320-00-721-5244	96906	MS16535-77	RIVET, TUBULAR.....	EA	4
1	109	PAHZZ	5935-00-597-1292	28480	08640-60103	CONNECTOR, RECEPTAC.....	EA	1
1	110	PAHZZ		28480	08640-00059	INSULATOR.....	EA	1
1	111	PAHZZ		82389	11P1103	SWITCH, SLIDE.....	EA	1
1	112	PAHZZ	5310-00-543-4652	96906	MS35333-69	WASHER, LOCK.....	EA	2
1	113	PAHZZ	5305-00-054-5637	96906	MS51957-3	SCREW, MACHINE.....	EA	2
1	114	PAHZZ		98291	069-702-3490	CABLE ASSY, RF.....	EA	1
1	115	PAHZZ		28480	08640-60320	ATTENUATOR, VARIABLE.....	EA	1
1	116	PEOZZ		28480	5001-0135	WRENCH, OPEN END.....	EA	1
1	117	XBHZZ		02768	8511-28-00-9909	CLAMP, CABLE.....	EA	2
1	118	PAHZZ	5305-00-054-6652	96906	MS51957-28	SCREW, MACHINE.....	EA	4
1	119	PAHZZ		28480	08640-60303	CIRCUIT CARD ASSEMB.....	EA	1

(1) ILLUSTRATION		(2)	(3)	(4)	(5)	(6) DESCRIPTION	(7)	(8)
(a) FIG NO	(b) ITEM NO	SMR CODE	NATIONAL STOCK NUMBER	FSCM	PART NUMBER	USABLE DN CODE	U M	QTY INC IN UNIT
1	120	PAHZZ		98291	069-702-3486	CABLE ASSY, RF.....	EA	1
1	121	XBHZZ		28480	08640-00015	CHAS, ELEC EQPT.....	EA	1
1	122	PAHZZ	5995-00-466-9164	28480	8120-0581	CABLE ASSEMBLY, RADI.....	EA	1
1	123	PAHZZ	5995-00-466-9158	28480	8120-0580	CABLE ASSEMBLY, RADI.....	EA	1
1	124	PAHZZ	5995-00-466-9189	28480	08640-20363	CABLE ASSY, RF.....	EA	1
1	125	XBHZZ		28480	3030-0343	SET SCREW.....	EA	1
1	126	PAHZZ		98291	069-702-3265	CABLE ASSY, RF.....	EA	1
1	127	PAHZZ		98291	069-702-3489	CABLE ASSY, RF.....	EA	1
1	128	XBHZZ		28480	0340-0486	INSULATOR, TSTR.....	EA	1
1	129	PAHZZ	5320-00-954-0113	96906	MS16535-155	RIVET, TUBULAR.....	EA	2
1	130	PAHZZ	5935-00-885-8598	71785	133-32-10-013	SOCKET, PLUG-IN ELEC.....	EA	1
1	131	PAHZZ		28480	08640-60018	PRINTED WIRING BOAR.....	EA	1
1	132	PAHZZ		28480	08640-60001	CIRCUIT CARD ASSEMB.....	EA	1
1	133	XBHZZ		28480	08640-00014	CHAS, ELEC EQPT.....	EA	1
1	134	PAHZZ	5305-00-059-3656	96906	MS51958-60	SCREW, MACHINE.....	EA	4
1	135	XBHZZ		28480	08640-00021	SHIELD, AMPL.....	EA	1
1	136	PAHZZ	5305-00-054-6668	96906	MS51957-43	SCREW, MACHINE.....	EA	2
1	137	PAHZZ		28480	8120-1593	CABLE, SPECIAL PURPO.....	IN	20
1	138	XBHZZ		28480	7120-4294	PLATE, INSTR.....	EA	2
1	139	PAHZZ	5365-01-062-3630	28480	0380-0004	SPACER, SLEEVE.....	EA	2
1	140	XBHZZ		28480	08640-40068	COVER, XFMR.....	EA	1
1	141	PAHZZ		28480	2510-0194	SCREW, SELF-LOCKING.....	EA	2
1	142	PAHZZ	5310-00-045-5206	96906	MS15795-907	WASHER, FLAT.....	EA	2
1	143	PAHZZ		81349	RMR60K4642FM	RES, FXD, FILM.....	EA	1
1	144	PAHZZ		28480	08640-60192	CABLE ASSEMBLY, RADI.....	EA	1
1	145	PAHZZ	5930-00-164-0850	28480	3101-1395	SWITCH, ELECTRICAL.....	EA	1
1	146	PAHZZ		01121	10M884-70	RES, VAR, NONMW.....	EA	1
1	147	PAHHH		28480	08640-60019	CIRCUIT CARD ASSEMB.....	EA	1
1	148	PAHZZ	6625-01-063-6797	28480	08640-60309	CIRCUIT CARD ASSEMB.....	EA	1
1	149	PAHZZ		28480	08640-60029	CIRCUIT CARD ASSEMB.....	EA	1
1	150	PAHHH	5930-01-099-2912	28480	08640-60325	SWITCH ASSEMBLY.....	EA	1
1	151	XBHZZ		99934	A201-34A	CPLG, SHAFT, FLEX.....	EA	1
1	152	XBHZZ		28480	8160-0245	SHLD GSKT, ELEC.....	EA	1
1	153	PAHZZ	5305-00-054-6681	96906	MS51957-54	SCREW, MACHINE.....	EA	4
1	154	PAHHH		28480	08640-60099	CIRCUIT CARD ASSEMB.....	EA	1
1	155	XBHZZ		28817	02-0101A170	SHLD GSKT, ELEC.....	EA	1
1	156	XBHZZ		28817	02-0101A650-01	SHLD GSKT, ELEC.....	EA	1
1	157	XBHZZ		28480	08640-20228	COLLAR, SHAFT.....	EA	1
1	158	XBHZZ		28480	3030-0021	SCREW, CAP, SCH.....	EA	2
1	159	PAHZZ		28480	606A-34C-6	COLLAR, SHAFT.....	EA	1

(1) ILLUSTRATION		(2)	(3)	(4)	(5)	(6) DESCRIPTION	(7)	(8)
(a) FIG NO	(b) ITEM NO	SMR CODE	NATIONAL STOCK NUMBER	FSCM	PART NUMBER	SEARCH CODE	U.M.	QTY INC IN UNIT
1	160	XBHZZ		28480	8160-0276	SHLD GKST,ELEC.....	EA	1
1	161	PAHZZ		98291	069-702-3485	CABLE ASSY,RF.....	EA	1
1	162	PAHZZ		28480	5000-8707	COVER,ACCESS.....	EA	1
1	163	PAHZZ		28480	5000-8705	COVER,SIDE.....	EA	2
1	164	PAHZZ	5305-00-054-6667	96906	MS51957-42	SCREW,MACHINE.....	EA	4
1	165	PAHZZ		28480	5060-8737	HANDLE.....	EA	2
1	166	PAHZZ	5340-00-435-5340	28480	5060-0222	HANDLE ASSEMBLY.....	EA	2
1	167	PAHZZ	5305-00-066-7328	96906	MS24693C27	SCREW,MACHINE.....	EA	4
1	168	XBHZZ		28480	4420-10480-1	PLATE,IDENT.....	EA	1
1	169	PAHZZ		28480	08640-00115	COVER,ACCESS.....	EA	1
1	170	XBHZZ		28480	08640-00109	FOAM STRIP,COV.....	EA	1
1	171	PAHZZ		28480	08640-20075	FRAME,SIDE.....	EA	2
1	172	PAHZZ		28480	08640-00026	REAR PANEL.....	EA	1
1	173	PAHZZ	5305-00-765-4257	96906	MS51959-43	SCREW,MACHINE.....	EA	2
1	174	PAHZZ	5310-00-550-0286	96906	MS35336-15	WASHER,LOCK.....	EA	6
1	175	PAHZZ		28480	5000-8711	COVER,SIGNAL GENERA.....	EA	1
1	176	PAHZZ	6625-00-412-1204	28480	5000-0051	STRIP,TRIM.....	EA	2
1	177	XBHZZ		28480	08640-00037	INSULATOR,COVER.....	EA	1
1	178	PAHZZ		28480	08640-00116	COVER,BOTTOM.....	EA	1
1	179	XBHZZ		28480	08640-00074	FOAM STRIP,COV.....	EA	1
1	180	PAHZZ	6625-00-903-0348	28480	5060-0767	FOOT ASSEMBLY,OSC.....	EA	5
1	181	XBHZZ		78553	C11351-632-24B	NUT,SHEET SPR.....	EA	4
1	182	PAHZZ	6625-00-760-9521	28480	1490-0030	STAND,CABINET,TILT.....	EA	1
1	183	PAHZZ		28480	08640-20204	PANEL,FRONT.....	EA	1
1	184	PAHZZ	5305-00-765-4252	96906	MS51959-42	SCREW,MACHINE.....	EA	6

PREFIX ALL REFERENCE  
DESIGNATIONS WITH A3.



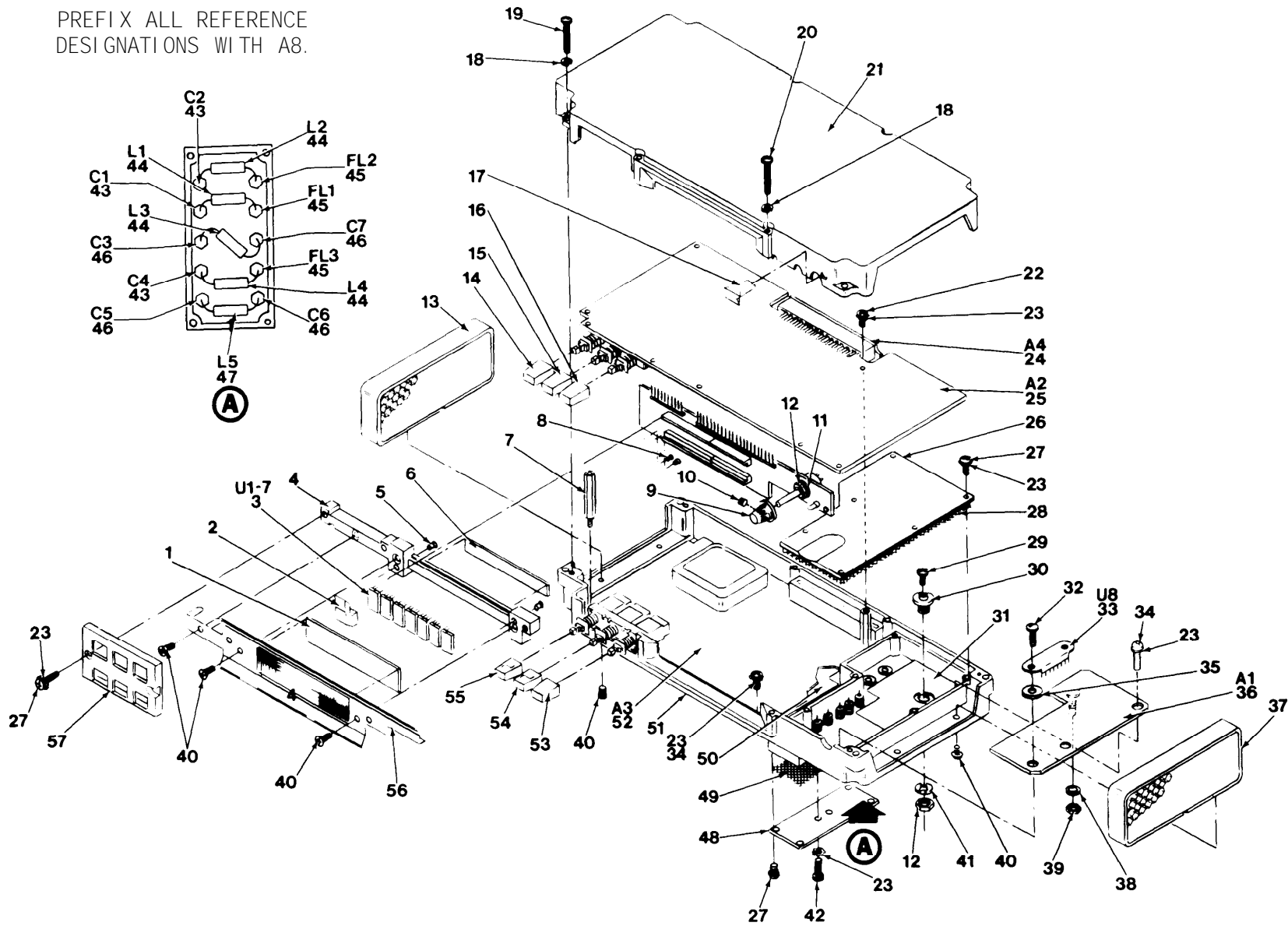
TM11-6625-2780-24P-1

Figure 2. A3 Oscillator Assembly

EL8GZ007

(1) ILLUSTRATION		(2)	(3)	(4)	(5)	(6) DESCRIPTION	(7)	(8)
(a) FIG NO	(b) ITEM NO	SMR CODE	NATIONAL STOCK NUMBER	FSCM	PART NUMBER	USAREC BN CODE	U M	QTY INC IN UNIT
						<b>GROUP 01 OSCILLATOR ASSEMBLY A3 (INCLUDES A3 A1 A2 AND A3 A1 A3)</b>		
2	1	XBHZZ		97464	7100-12CD	RING,RETAINING.....	EA	1
2	2	PAHZZ	3020-00-518-1170	28480	1430-0537	GEAR CLUSTER,SPUR.....	EA	1
2	3	PAHZZ	5305-00-717-6949	96906	M551963-10	SET SCREW.....	EA	2
2	4	PAHZZ	3020-00-519-4487	28480	1430-0759	GEAR,SPUR.....	EA	1
2	5	PAHZZ		28480	08640-20106	BUSHING.....	EA	2
2	6	PAHZZ		02111	152-45	RES,VAR,WW.....	EA	1
2	7	PAHZZ		01121	7084N116S103W	RES,VAR,NONWW.....	EA	1
2	8	PAHZZ	5961-00-579-1681	28480	5086-4282	TRANSISTOR.....	EA	1
2	9	XAHZZ		96906	M551957-121	SCREW,MACHINE.....	EA	8
2	10	PAHZZ	5310-00-655-9505	96906	M535340-40	WASHER, LOCK.....	EA	2
2	11	XAHZZ		28480	08640-00011	COVER,ACCESS.....	EA	1
2	12	XAHZZ		28817	08-2220-1476	SHLD GSKT,ELEC.....	EA	4
2	13	XAHZZ		96906	M551957-14	SCREW,MACHINE.....	EA	2
2	14	XDHZZ		28480	3050-0105	WASHER,FLAT.....	EA	2
2	15	PAHZZ		28480	08640-60037	CIRCUIT CARD ASSEMB.....	EA	1
2	16	PAHZZ		28480	08640-20224	CAP,TRANSISTOR.....	EA	1
2	17	XBHZZ		28817	02-0119-3493-01	SHLD GSKT,ELEC.....	EA	1
2	18	XBHZZ		07700	20-90044	BRAID,RFI.....	IN	1
2	19	PAHZZ		28480	08640-60196	CONNECTOR,ELECTRICA.....	EA	1
2	20	XAHZZ		96906	M551957-15	SCREW,MACHINE.....	EA	8
2	21	PAHZZ		28480	08640-60024	CIRCUIT CARD ASSEMB.....	EA	1
2	22	XBHZZ		28480	08640-00085	COVER,ACCESS.....	EA	1
2	23	PAHZZ		28480	08640-60206	FINE TUNE ASSY.....	EA	1
2	24	PAHZZ	5305-00-054-5653	96906	M551957-19	SCREW,MACHINE.....	EA	2
2	25	XBHZZ		28480	08640-20193	SHAFT,STRAIGHT.....	EA	1
2	26	XBHZZ		79136	5133-12SMDR	RING,RETAINING.....	EA	1

PREFIX ALL REFERENCE  
DESIGNATIONS WITH A8.



TM11-6625-2780-24P-1

EL8GZ008

Figure 3. A8 Counter Assembly

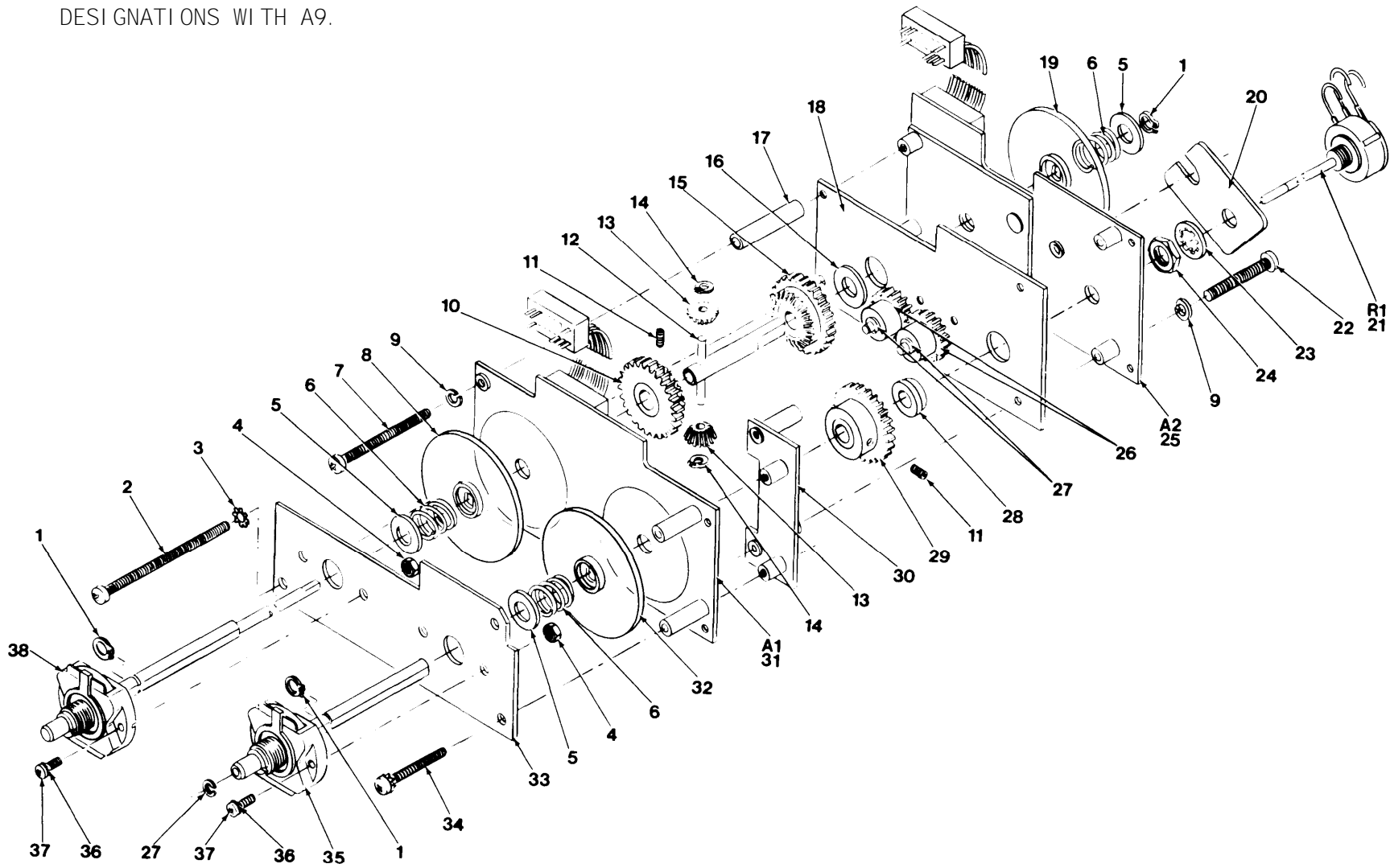
(1) ILLUSTRATION		(2)	(3)	(4)	(5)	(6) DESCRIPTION	(7)	(8)
(a) FIG NO	(b) ITEM NO	SMR CODE	NATIONAL STOCK NUMBER	FSCM	PART NUMBER	USABLE ON CODE	QTY	INC IN UNIT
<b>GROUP 02 COUNTER ASSEMBLY (A8)</b>								
3	1			28480	5021-0855	WINDOW, OBSVR.....	EA	1
3	2			28480	08640-40041	INDICATOR, LIGHT.....	EA	1
3	3			28480	1990-0330	DISPLAY, NUMERIC.....	EA	7
3	4			28480	08640-20281	HEAT SINK, ELEC.....	EA	1
3	5			02768	201-080551-0108	RIVET, BLIND.....	EA	2
3	6			28480	08640-00096	INSULATOR, PLATE.....	EA	1
3	7			28480	08640-20089	POST, ELECTRICAL-MEC.....	EA	2
3	8		5305-00-144-9078	83385	0516-0005	SCREW, MACHINE.....	EA	2
3	9			28480	08640-40067	KNOB.....	EA	1
3	10		5305-00-717-6950	96906	M551963-9	SET SCREW.....	EA	2
3	11		5301-00-725-1985	78189	1914-05-00	WASHER, LOCK.....	EA	1
3	12		5310-00-550-3350	24454	A7039589P1	NUT, PLAIN, HEXAGON.....	EA	1
3	13			28480	08640-00052	FRAME, SHIELD.....	EA	1
3	14			28480	5040-0391	PUSH BUTTON.....	EA	1
3	15			28480	5040-0392	BUTTON.....	EA	1
3	16			28480	5040-0393	PUSH BUTTON.....	EA	1
3	17			28480	08640-40003	INDICATOR, LIGHT.....	EA	1
3	18		5310-00-655-9505	96906	MS35340-40	WASHER, LOCK.....	EA	8
3	19		5305-00-054-5651	96906	M551957-17	SCREW, MACHINE.....	EA	4
3	20		5305-00-054-5655	96906	M551957-21	SCREW, MACHINE.....	EA	4
3	21			28480	08640-20202	COVER, TOP.....	EA	1
3	22		5305-00-054-5648	96906	M551957-14	SCREW, MACHINE.....	EA	2
3	23		5310-00-058-3599	96906	MS35335-57	WASHER, LOCK.....	EA	6
3	24		6625-00-521-2607	50440	08640-60028	CIRCUIT CARD ASSEMB.....	EA	1
3	25			28480	08640-60191	CIRCUIT CARD ASSEMB.....	EA	1
3	26			28480	08640-20280	COVER, COUNTER.....	EA	1
3	27		5305-00-054-5649	96906	M551957-15	SCREW, MACHINE.....	EA	4
3	28			28480	8160-0220	SHIELDING GASKET, EL.....	EA	1
3	29		5305-00-054-5637	96906	M551957-3	SCREW, MACHINE.....	EA	1
3	30			28480	08640-20297	GROUND, SCALER.....	EA	1
3	31			28480	08640-00100	INSULATOR, PLATE.....	EA	1
3	32		5305-00-570-0456	28480	2200-0704	SCREW, MACHINE.....	EA	2
3	33		5962-01-006-8383	28480	1820-1003	MICROCIRCUIT, DIGITA.....	EA	1
3	34		5305-00-054-5653	96906	M551957-19	SCREW, MACHINE.....	EA	2
3	35			86928	5624-16-10	INSULATOR, WASHER.....	EA	2
3	36			28480	08640-60357	CIRCUIT CARD ASSEMB.....	EA	1
3	37			28480	08640-00051	FRAME, SHIELD.....	EA	1
3	38			16733	500222	WASHER, LOCK.....	EA	3
3	39		5310-00-151-8877	98291	3002-18	NUT, PLAIN, HEXAGON.....	EA	3

(1) ILLUSTRATION		(2)	(3)	(4)	(5)	(6)	(7)	(8)
(a) FIG NO	(b) ITEM NO	SMR CODE	NATIONAL STOCK NUMBER	FSCM	PART NUMBER	DESCRIPTION	USABLE UN CODE	QTY INC IN UNIT
3	40	PAHZZ	5305-00-993-9189	96906	MS24693C2	SCREW, MACHINE.....	EA	3
3	41	PAHZZ	5310-00-568-8597	18876	8175120	WASHER, LOCK.....	EA	1
3	42	PAHZZ	5305-00-054-5653	96906	MS51957-19	SCREW, MACHINE.....	EA	2
3	43	PAHZZ		72982	2499008X5V0-502Z	CAP, FXD, CERAMIC.....	EA	3
3	44	PAHZZ	5950-00-905-8585	06560	4425-3K	COIL, RADIO FREQUENC.....	EA	4
3	45	PAHZZ		00779	859554-5	FILTER, LOW-PASS.....	EA	3
3	46	PAHZZ	5910-00-451-3194	28480	0160-2357	CAPACITOR, FIXED, CER.....	EA	4
3	47	PAHZZ		06560	15-4415-1M	CHOKE, RAD FREQ.....	EA	1
3	48	PAHZZ		28480	08640-00009	COVER, FILTER.....	EA	1
3	49	PAHZZ		28480	8160-0219	SHIELDING GASKET, EL.....	EA	1
3	50	XBHZZ		28480	08640-00102	INSULATOR, PLATE.....	EA	1
3	51	XBHZZ		28480	08640-20203	COVER, BOTTOM.....	EA	1
3	52	PAHZZ		28480	08640-60330	CIRCUIT CARD ASSEMB.....	EA	1
3	53	PAHZZ		28480	5040-6945	PUSH BUTTON.....	EA	1
3	54	PAHZZ		28480	5040-6947	PUSH BUTTON.....	EA	1
3	55	PAHZZ		28480	5040-6946	PUSH BUTTON.....	EA	1
3	56	PAHZZ		28480	08640-00104	LIGHT EMITTING DIOD.....	EA	1
3	57	PAHZZ		28480	08640-20092	SHIELD, BUTTON.....	EA	1





PREFIX ALL REFERENCE  
DESIGNATIONS WITH A9.



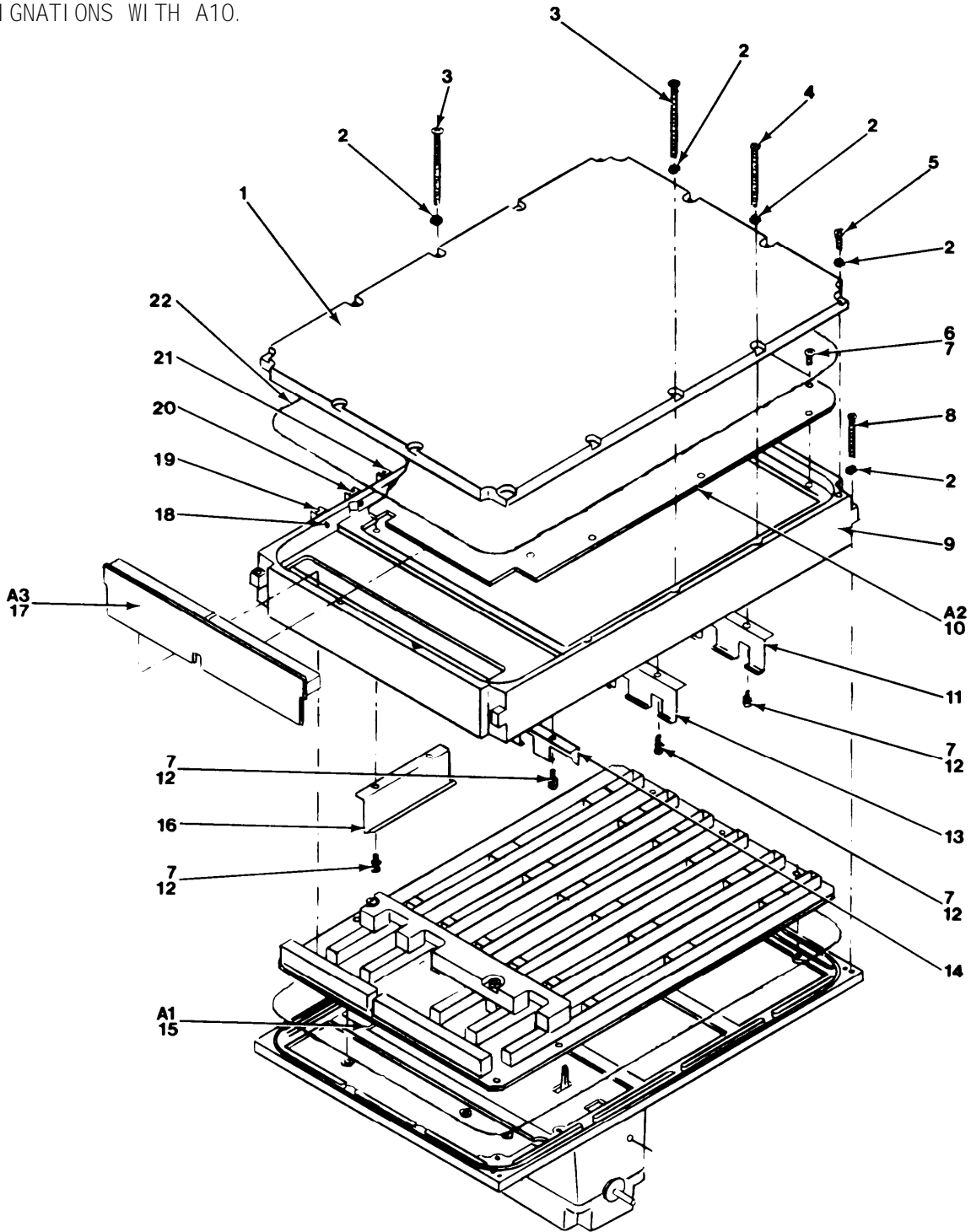
TM11-6625-2780-24P-1

EL8GZ009

Figure 4. A9 Switch Assembly

(1) ILLUSTRATION		(2)	(3)	(4)	(5)	(6) DESCRIPTION	(7)	(8)
(a) FIG NO	(b) ITEM NO	SMP CODE	NATIONAL STOCK NUMBER	FSCM	PART NUMBER	USABLE ON CODE	EA	QTY INC IN UNIT
<b>GROUP 03 SWITCH ASSEMBLY (A9)</b>								
4	1	XBHZZ		79136	5100-25SMD25STCD	RING, RETAINING.....	EA	1
4	2	PAHZZ		96906	MS35206-330	SCREW, MACHINE.....	EA	1
4	3	PAHZZ	5310-00-019-0670	96906	MS35333-106	WASHER, LOCK.....	EA	3
4	4	PAHZZ	5310-00-934-9748	96906	MS35649-244	NUT, PLAIN, HEXAGON.....	EA	2
4	5	XBHZZ		28480	3050-0103	WASHER, FLAT.....	EA	1
4	6	PAHZZ	6625-00-806-8799	28480	1460-0019	SPRING, HELICAL, COMP.....	EA	1
4	7	PAHZZ	5305-00-054-6660	96906	MS51957-36	SCREW, MACHINE.....	EA	1
4	8	PAHZZ		28480	08640-20249	SWITCH, ROTARY.....	EA	1
4	9	PAHZZ	5310-00-839-3770	96906	MS35340-41	WASHER, LOCK.....	EA	1
4	10	PAHZZ	3020-00-518-1157	28480	1430-0773	GEAR CLUSTER, BEVEL.....	EA	1
4	11	PAHZZ	5305-00-717-6950	96906	MS51963-9	SET SCREW.....	EA	2
4	12	XBHZZ		28480	08640-20242	SHAFT, SWITCH.....	EA	1
4	13	PAHZZ	3020-00-518-1139	28480	1430-0772	GEAR, BEVEL.....	EA	2
4	14	XBHZZ		97464	7100-12CD	RING, RETAINING.....	EA	2
4	15	PAHZZ	3020-00-518-1169	28480	1430-0774	GEAR CLUSTER, BEVEL.....	EA	1
4	16	XBHZZ		73734	103204	INSULATOR, WSHR.....	EA	1
4	17	PAHZZ		28480	0380-0013	SPACER, SLEEVE.....	EA	1
4	18	XBHZZ		28480	08640-00092	PLATE, MTG, GEAR.....	EA	1
4	19	PAHZZ		28480	08640-20248	SWITCH, ROTARY.....	EA	1
4	20	XBHZZ		28480	08640-00093	PLATE, MTG, RES.....	EA	1
4	21	PAHZZ		32997	3852X38-252A	RESISTOR, VARIABLE, N.....	EA	1
4	22	PAHZZ	5305-00-054-6655	96906	MS51957-31	SCREW, MACHINE.....	EA	2
4	23	PAHZZ	5310-00-568-8597	18876	8175120	WASHER, LOCK.....	EA	1
4	24	PAHZZ	5310-00-550-3350	24454	A7039589P1	NUT, PLAIN, HEXAGON.....	EA	1
4	25	PAHZZ		28480	08640-60308	CIRCUIT CARD ASSEMB.....	EA	1
4	26	XBHZZ		28480	08640-20355	GEAR, SPUR.....	EA	2
4	27	XBHZZ		79136	5133-12SMDR	RING, RETAINING.....	EA	1
4	28	XBHZZ		28480	08640-20241	BUSHING, SLEEVE.....	EA	1
4	29	PAHZZ	3020-00-519-4487	28480	1430-0759	GEAR, SPUR.....	EA	1
4	30	XBHZZ		28480	08640-00098	PLATE, SUPPORT.....	EA	1
4	31	PAHZZ		28480	08640-60307	CIRCUIT CARD ASSEMB.....	EA	1
4	32	PAHZZ		28480	08640-20250	SWITCH, ROTARY.....	EA	1
4	33	XBHZZ		28480	08640-00091	PL, MTG, DETENT.....	EA	1
4	34	PAHZZ	5305-00-054-6658	96906	MS51957-34	SCREW, MACHINE.....	EA	2
4	35	PAHZZ		28480	3130-0504	SHAFT ASSY, SW.....	EA	1
4	36	PAHZZ	5310-00-058-3599	96906	MS35335-57	WASHER, LOCK.....	EA	2
4	37	PAHZZ	5305-00-054-5649	96906	MS51957-15	SCREW, MACHINE.....	EA	2
4	38	PAHZZ		28480	3130-0503	SHAFT ASSY, SW.....	EA	1

PREFIX ALL REFERENCE  
DESIGNATIONS WITH A10.



EL8GZ010

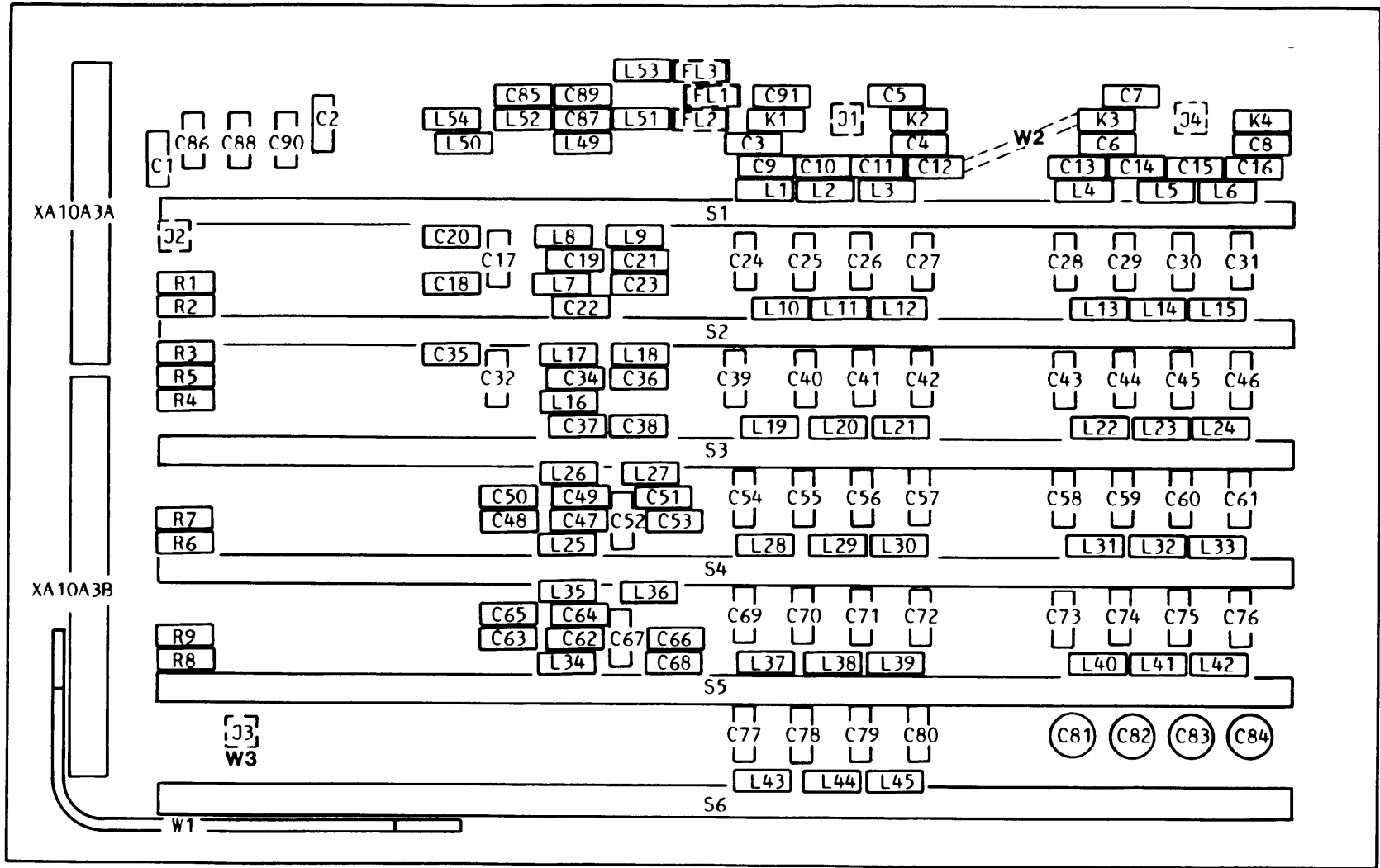
Figure 5. A10 Electronic Component Assembly

SECTION 11

(1) ILLUSTRATION		(2)	(3)	(4)	(5)	(6) DESCRIPTION	(7)	(8)
(a) FIG NO	(b) ITEM NO	SMR CODE	NATIONAL STOCK NUMBER	FSCM	PART NUMBER	USABLE ON CODE	QTY INC IN UNIT	
<b>GROUP 04 ELECTRONIC COMPONENT ASSEMBLY A10</b>								
5	1	XBHZZ		28480	08640-20268	COVER, TOP.....	EA	1
5	2	PAHZZ	5310-00-655-9505	96906	MS35340-40	WASHER, LOCK.....	EA	14
5	3	PAHZZ		28480	2200-0129	SCREW.....	EA	2
5	4	XBHZZ		28480	2200-0127	SCREW, MACHINE.....	EA	8
5	5	PAHZZ	5305-00-054-5651	96906	MS51957-17	SCREW, MACHINE.....	EA	4
5	6	PAHZZ	5305-00-054-5648	96906	MS51957-14	SCREW, MACHINE.....	EA	6
5	7	PAHZZ	5310-00-058-3599	96906	MS35335-57	WASHER, LOCK.....	EA	3
5	8	PAHZZ	5305-00-400-8531	96906	MS51957-121	SCREW, MACHINE.....	EA	4
5	9	XBHZZ		28480	08640-20269	CASTING, CENTER.....	EA	1
5	10	PAHHH		28480	08640-60354	CIRCUIT CARD ASSEMB.....	EA	1
5	11	XBHZZ		28480	08640-00047	SPRING, SHIELD.....	EA	1
5	12	PAHZZ	5305-00-054-5646	73734	23021	SCREW MACHINE.....	EA	3
5	13	PAHZZ		28480	08640-00049	SHIELDING GASKET, EL.....	EA	1
5	14	XBHZZ		28480	08640-00048	SPRING, SHIELD.....	EA	1
5	15	PAHHH		28480	08640-60204	FILTER ASSEMBLY, RAD.....	EA	1
5	16	XBHZZ		28480	08640-00050	SPRING, SHIELD.....	EA	1
5	17	PAHZZ	6625-00-521-2606	28480	08640-60022	CIRCUIT CARD ASSEMB.....	EA	1
5	18	PAHZZ	5320-00-904-4136	81349	M24243/1-B403	RIVET, BLIND.....	EA	1
5	19	XBHZZ		28480	0403-0156	GUIDE, CKT CARD.....	EA	1
5	20	XBHZZ		28480	0403-0157	GUIDE, CKT CARD.....	EA	1
5	21	XBHZZ		28480	0403-0158	GUIDE, CKT CARD.....	EA	1
5	22	PAHZZ		28817	01-0101-4075	GASKETING MATERIAL.....	EA	1

PREFIX ALL REFERENCE  
DESIGNATIONS WITH A10A1.

20

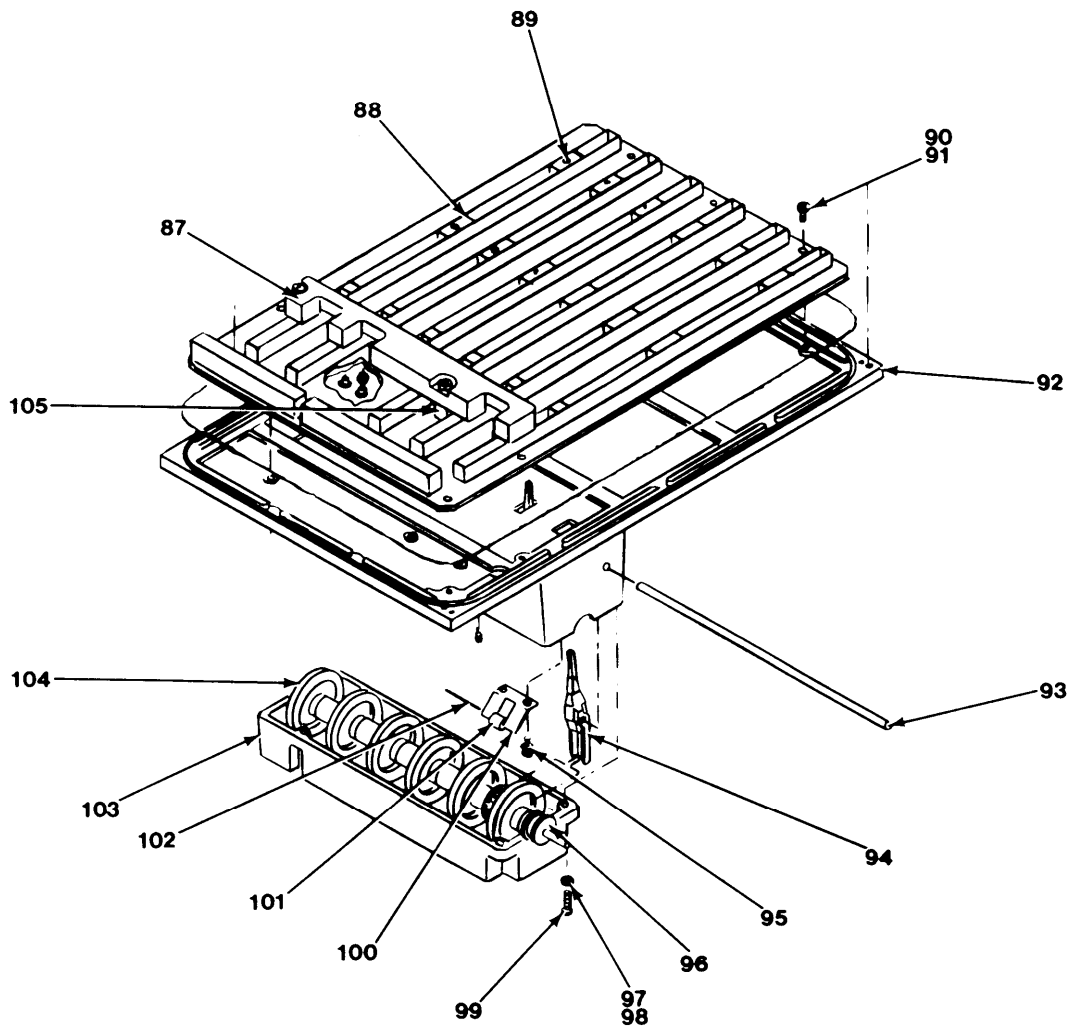


TM11-6625-2780-24P-1

EL8GZ011

Figure 6. A10A1 Filter Assembly (Sheet 1 of 3)

PREFIX ALL REFERENCE  
DESIGNATIONS WITH A10A1.



EL8GZ012

Figure 6. A10A1 Filter Assembly (Sheet 2 of 3)

REF DES	ITEM NO	REF DES	ITEM NO	REF DES	ITEM NO	REF DES	ITEM NO	REF DES	ITEM NO	REF DES	ITEM NO
A10A1	15	C46	25	C91	1	L34	62				
C1	1	C47	2	FL1	51	L35	55				
C2	1	C48	27	FL2	51	L36	75				
C3	1	C49	21	FL3	51	L37	76				
C4	1	C50	28	J1	52	L38	76				
C5	1	C51	29	J2	52	L39	76				
C6	1	C52	6	J3	52	L40	77				
C7	1	C53	30	J4	52	L41	77				
C8	1	C54	31	K1	53	L42	77				
C9	2	C55	32	K2	53	L43	77				
C10	3	C56	32	K3	53	L44	77				
C11	3	C57	33	K4	53	L45	77				
C12	4	C58	34	L1	54	L49	78				
C13	5	C59	33	L2	55	L50	78				
C14	4	C60	33	L3	54	L51	79				
C15	4	C61	35	L4	56	L52	79				
C16	5	C62	22	L5	57	L53	79				
C17	6	C63	36	L6	56	L54	79				
C18	7	C64	30	L7	58	R1	80				
C19	8	C65	37	L8	59	R2	80				
C20	9	C66	38	L9	60	R3	80				
C21	10	C67	13	L10	61	R4	80				
C22	11	C68	39	L11	62	R5	80				
C23	12	C69	40	L12	61	R6	80				
C24	13	C70	41	L13	63	R7	80				
C25	14	C71	41	L14	64	R8	80				
C26	14	C72	42	L15	63	R9	80				
C27	15	C73	43	L16	59	S1	81				
C28	16	C74	42	L17	65	S2	81				
C29	17	C75	42	L18	66	S3	81				
C30	17	C76	44	L19	67	S4	81				
C31	16	C77	45	L20	68	S5	81				
C32	13	C78	46	L21	67	S6	81				
C34	12	C79	46	L22	69	W1	82				
C35	18	C80	45	L23	70	W2	83				
C36	19	C81	47	L24	69	W3	84				
C37	20	C82	48	L25	65	XA10A	85				
C38	21	C83	48	L26	62	XA10A	86				
C39	22	C84	47	L27	71						
C40	23	C85	49	L28	72						
C41	23	C86	50	L29	73						
C42	24	C87	49	L30	72						
C43	25	C88	50	L31	74						
C44	26	C89	49	L32	74						
C45	26	C90	50	L33	74						

EL8GZ013

Figure 6. A10A1 Filter Assembly (Sheet 3 of 3)



(1) ILLUSTRATION		(2)	(3)	(4)	(5)	(6)	(7)	(8)
(a) FIG NO	(b) ITEM NO	SMR CODE	NATIONAL STOCK NUMBER	FSCM	PART NUMBER	DESCRIPTION	USABLE UN CODE	QTY INC IN UNIT
						<b>GROUP 0401 FILTER ASSEMBLY (A10A1)</b>		
6	1	PAHZZ	5910-00-048-6925	56289	C023F101F103ZS22 CD	CAP,FXD,CERAMIC.....		EA 9
6	2	PAHZZ	5910-00-828-0808	72136	RDM15F181G3C	CAPACITOR, FIXED, MIC.....		EA 2
6	3	PAHZZ	5910-00-831-8690	72136	RDM15F321F3C	CAPACITOR, FIXED, MIC.....		EA 2
6	4	PAHZZ	5910-00-772-6726	28480	0140-0220	CAP,FXD,MICA.....		EA 3
6	5	PAHZZ	5910-01-043-6897	81349	CMR05F131G0DR	CAPACITOR, FIXED, MIC.....		EA 2
6	6	PAHZZ	5910-00-813-8645	72136	DML5F751F300VDC	CAPACITOR, FIXED, MIC.....		EA 2
6	7	PAHZZ		72136	RDM19F322F1S	CAP,FXD,MICA.....		EA 1
6	8	PAHZZ		72136	RDM19F402F1C	CAPACITOR, FIXED, MIC.....		EA 1
6	9	PAHZZ		72136	RDM19F392F5C	CAP,FXD,MICA.....		EA 1
6	10	PAHZZ	5910-00-407-0255	72136	RDM19F2780G3C	CAP,FXD,MICA.....		EA 1
6	11	PAHZZ	5910-01-034-9281	81349	CMR06F302F0DR	CAPACITOR, FIXED, MIC.....		EA 1
6	12	PAHZZ	5910-01-058-9579	72136	RDM19F202F1C	CAPACITOR, FIXED, MIC.....		EA 2
6	13	PAHZZ		72136	RDM15F361F3S	CAP,FXD,MICA.....		EA 3
6	14	PAHZZ	5910-00-776-4174	28480	0160-0341	CAP,FXD,MICA.....		EA 2
6	15	PAHZZ	5910-00-018-0918	81349	CML0F0391G03	CAPACITOR, FIXED, MIC.....		EA 1
6	16	PAHZZ	5910-00-998-5447	81349	CML0F0241G03	CAPACITOR, FIXED, MIC.....		EA 2
6	17	PAHZZ		72136	RDM15F431J3C	CAP,FXD,MICA.....		EA 2
6	18	PAHZZ		72136	RDM19F1916F1S	CAP,FXD,MICA.....		EA 1
6	19	PAHZZ		72136	RDM19F142F1C	CAP,FXD,MICA.....		EA 1
6	20	PAHZZ		72136	RDM19F1470F1C	CAP,FXD,MICA.....		EA 1
6	21	PAHZZ		72136	RDM19E102F5S	CAP,FXD,MICA.....		EA 2
6	22	PAHZZ		72136	RDM15F910F3C	CAP,FXD,MICA.....		EA 2
6	23	PAHZZ		72136	RDM15F161J3C	CAP,FXD,MICA.....		EA 2
6	24	PAHZZ	5910-00-463-5949	28480	0160-2204	CAPACITOR, FIXED, MIC.....		EA 1
6	25	PAHZZ	5910-01-043-6898	81349	CMR05E620G0DR	CAPACITOR, FIXED, MIC.....		EA 2
6	26	PAHZZ		72136	RDM15F111F3S	CAP,FXD,MICA.....		EA 2
6	27	PAHZZ		72136	RDM15F801F3S	CAP,FXD,MICA.....		EA 1
6	28	PAHZZ		72136	RDM15F95851S	CAP,FXD,MICA.....		EA 1
6	29	PAHZZ		72136	RDM15F701F1C	CAP,FXD,MICA.....		EA 1
6	30	PAHZZ		72136	RDM15F501F3C	CAP,FXD,MICA.....		EA 2
6	31	PAHZZ	5910-00-406-9675	28480	0160-2307	CAP,FXD,MICA.....		EA 1
6	32	PAHZZ		72136	RDM15E800G3S	CAP,FXD,MICA.....		EA 2
6	33	PAHZZ		00853	RDM15E510J3S	CAP,FXD,MICA.....		EA 3
6	34	PAHZZ	5910-00-883-6281	28480	0160-2306	CAPACITOR, FIXED, MIC.....		EA 1
6	35	PAHZZ	5910-00-106-6977	81349	CM10ED300G03	CAP,FXD,MICA.....		EA 1
6	36	PAHZZ		72136	RDM15F401F3S	CAP,FXD,MICA.....		EA 1
6	37	PAHZZ		72136	RDM15F481F3S	CAP,FXD,MICA.....		EA 1
6	38	PAHZZ		72136	RDM15F351F1C	CAP,FXD,MICA.....		EA 1

(1) ILLUSTRATION		(2)	(3)	(4)	(5)	(6) DESCRIPTION	(7)	(8)
(a) FIG NO	(b) ITEM NO	SMR CODE	NATIONAL STOCK NUMBER	FSCM	PART NUMBER	USABLE ON CODE	M	QTY INC IN UNIT
6	39	PAHZZ	5910-00-138-5048	28480	0160-3046	CAPACITOR, FIXED, MIC.....	EA	1
6	40	PAHZZ	5910-00-903-8336	72982	301-000C0G0-220J	CAPACITOR.....	EA	1
6	41	PAHZZ	5910-00-075-9238	81349	CM10ED390G03	CAPACITOR, FIXED, MIC.....	EA	2
6	42	PAHZZ		72982	301-000C0G0-240J	CAP, FXD, CERAMIC.....	EA	3
6	43	PAHZZ	5910-00-789-6956	72982	301NP013PFJ	CAP, FXD, CERAMIC.....	EA	1
6	44	PAHZZ	5910-00-887-9754	28480	0160-2262	CAP, FXD, CERAMIC.....	EA	1
6	45	PAHZZ	5910-00-726-8695	81349	CC22CH100C	CAP, FXD, CERAMIC.....	EA	2
6	46	PAHZZ	5910-00-401-7891	28480	0160-2263	CAPACITOR, FIXED, CER.....	EA	2
6	47	PAHZZ	5910-00-103-7897	72982	538-011A2-8	CAPACITOR, VARIABLE.....	EA	2
6	48	PAHZZ	5910-00-983-2623	37695	265011-5	CAP, VAR, CERAMIC.....	EA	2
6	49	PAHZZ	5910-00-234-9817	56289	5C11875	CAPACITOR, FIXED, CER.....	EA	3
6	50	PAHZZ	5910-00-007-2002	81349	M39003/01-3003	CAPACITOR, FIXED, ELE.....	EA	3
6	51	PAHZZ		00779	859554-5	FILTER, LOW-PASS.....	EA	3
6	52	PAHZZ	5935-00-858-8794	98291	50-051-0109	CONNECTOR, RECEPTACL.....	EA	4
6	53	PAHZZ	5945-01-006-1410	20891	1228-4-1A	RELAY, REED.....	EA	4
6	54	PAHZZ	5950-00-564-4146	28480	9100-3375	CHOKER, RAD FREQ.....	EA	2
6	55	PAHZZ		06560	10103-21	CHOKER, RAD FREQ.....	EA	2
6	56	PAHZZ		06560	10100-322	COIL, RADIO FREQUENC.....	EA	2
6	57	PAHZZ	5950-0-563-3123	28480	9100-3362	CHOKER, RAD FREQ.....	EA	1
6	58	PAHZZ	5950-00-563-3130	28480	9100-3364	CHOKER, RAD FREQ.....	EA	1
6	59	PAHZZ	5950-00-563-3126	28480	9100-3374	CHOKER, RAD FREQ.....	EA	2
6	60	PAHZZ	5950-00-564-4149	28480	9100-3363	CHOKER, RAD FREQ.....	EA	1
6	61	PAHZZ	5950-00-564-4150	28480	9100-3369	CHOKER, RAD FREQ.....	EA	2
6	62	PAHZZ	5950-00-563-3134	28480	9100-3370	CHOKER, RAD FREQ.....	EA	3
6	63	PAHZZ	5950-00-564-4147	28480	9100-3368	CHOKER, RAD FREQ.....	EA	2
6	64	PAHZZ	5950-00-563-3124	28480	9100-3367	CHOKER, RAD FREQ.....	EA	1
6	65	PAHZZ	5950-00-572-5513	28480	09100-3372	CHOKER, RAD FREQ.....	EA	2
6	66	PAHZZ	5950-00-563-3137	28480	9100-3373	CHOKER, RAD FREQ.....	EA	1
6	67	PAHZZ	5950-00-563-3142	28480	9100-3359	CHOKER, RAD FREQ.....	EA	2
6	68	PAHZZ	5950-00-563-3122	28480	9100-3360	CHOKER, RAD FREQ.....	EA	1
6	69	PAHZZ		06560	10175-22	CHOKER, RAD FREQ.....	EA	2
6	70	PAHZZ		06560	010175-021J	CHOKER, RAD FREQ.....	EA	1
6	71	PAHZZ	5950-00-563-3136	28480	9100-3371	CHOKER, RAD FREQ.....	EA	1
6	72	PAHZZ	5960-00-564-4151	28480	9100-3355	CHOKER, RAD FREQ.....	EA	2
6	73	PAHZZ	5960-00-563-3138	28480	9100-3356	CHOKER, RAD FREQ.....	EA	1
6	74	PAHZZ		24226	8123-2	COIL, RADIO FREQUENC.....	EA	3
6	75	PAHZZ		06560	10132-34	COIL, RADIO FREQUENC.....	EA	1
6	76	PAHZZ	56950-00-584-0107	28480	9100-3512	COIL, RADIO FREQUENC.....	EA	3
6	77	PAHZZ		24226	8123-3	COIL, RADIO FREQUENC.....	EA	6
6	78	PAHZZ	5950-00-961-9600	99800	1025-36	COIL, RADIO FREQUENC.....	EA	2

(1)		(2)	(3)	(4)	(5)	(6)	(7)	(8)
ILLUSTRATION		SMR CODE	NATIONAL STOCK NUMBER	FSCM	PART NUMBER	DESCRIPTION	USABLE CN CODE	QTY INC IN UNIT
(a) FIG NO	(b) ITEM NO							
6	79	PAHZZ	5950-01-006-8323	50440	9100-4078	FILTER, RAD FREQ.....	EA	4
6	80	PAHZZ		81349	RNC55J10ROBS	RESISTOR, FIXED, FILM.....	EA	9
6	81	PAHZZ		28480	08640-60106	SWITCH, SLIDE.....	EA	6
6	82	PAHZZ		98291	069-702-3499	CABLE ASSY, RF.....	EA	1
6	83	PAHZZ	6625-00-521-2809	28480	8120-1832	CABLE ASSEMBLY, RADI.....	EA	1
6	84	PAHZZ	6625-00-521-2803	28480	8120-1831	CABLE ASSEMBLY, RADI.....	EA	1
6	85	PAHZZ	5935-00-405-7720	71785	252-15-30-300	CONNECTOR, RECEPTACL.....	EA	1
6	86	PAHZZ	5935-00-446-8768	28480	1251-2026	CONNECTOR, RECEPTACL.....	EA	1
6	87	XBHZZ		28480	08640-20261	CLAMP, SLIDE.....	EA	1
6	88	XBHZZ		28480	08640-20206	RETAINER, SLIDE.....	EA	12
6	89	XBHZZ		79136	5133-125MDR	RING, RETAINING.....	EA	12
6	90	PAHZZ		28480	2200-0105	SCREW, MACHINE.....	EA	10
6	91	PAHZZ	5310-00-058-3599	96906	MS35335-57	WASHER, LOCK.....	EA	2
6	92	XBHZZ		28480	08640-20274	COVER, BOTTOM.....	EA	1
6	93	XBHZZ		28480	08640-20083	SHAFT, FOLLOWER.....	EA	1
6	94	XBHZZ		28480	08640-40004	FOLLOWER, CAM.....	EA	6
6	95	PAHZZ	5305-00-054-5646	73734	23021	SCREW MACHINE.....	EA	2
6	96	PAHZZ		28480	08640-20214	BUSHING.....	EA	2
6	97	XBHZZ		76211	MEC5	INSULATOR, WSHR.....	EA	4
6	98	PAHZZ	5310-00-655-9505	96906	MS35340-40	WASHER, LOCK.....	EA	4
6	99	PAHZZ	5305-00-054-5650	96906	MS1957-16	SCREW, MACHINE.....	EA	4
6	100	PAHZZ		28480	08640-00029	SPRING.....	EA	1
6	101	XBHZZ		28480	00335-20034	ROLLER, DETENT.....	EA	1
6	102	XBHZZ		28480	1480-0352	PIN, STR, HDLS.....	EA	1
6	103	XBHZZ		28480	08640-20283	COVER, CAM.....	EA	1
6	104	PAHZZ	6625-01-081-0616	28480	08640-20082	SHAFT, CAM.....	EA	1
6	105	XBHZZ		28480	08640-20133	SUPPORT, CLAMP.....	EA	1





REF DES	ITEM NO	REF DES	ITEM NO	REF DES	ITEM NO	REF DES	ITEM NO	REF DES	ITEM NO	REF DES	ITEM NO
A10A2	10	C46	4	L11	9	R37	27	TP4	46		
C1	1	C47	5	L12	9	R38	33	U1	47		
C2	1	C48	2	L13	16	R39	34	U2	48		
C3	2	C49	2	Q1	17	R40	33	U3	48		
C4	2	C50	4	Q2	18	R41	24	U4	49		
C5	2	C51	4	Q3	18	R42	24	U5	50		
C6	3	C52	4	Q5	19	R43	24	U6	50		
C7	4	C53	5	Q6	20	R44	24	U7	51		
C9	2	C54	5	Q7	20	R45	26	U8	51		
C10	2	C55	5	R1	21	R46	27	U9	52		
C11	2	C56	5	R2	22	R47	26	U10	52		
C12	2	C57	2	R3	23	R48	27	U11	53		
C13	2	C58	5	R4	22	R49	33	U12	54		
C14	2	C59	7	R5	24	R50	34	U13	55		
C15	2	C60	6	R6	25	R51	24	U14	56		
C16	2	C61	5	R7	26	R52	33	U15	48		
C17	2	C62	7	R8	27	R53	24	U16	50		
C18	2	C63	6	R9	28	R54	24	VR1	57		
C19	5	C64	2	R10	29	R55	24	VR2	57		
C20	2	CR1	8	R11	24	R56	35	W1	58		
C21	2	CR2	8	R12	28	R57	26	W2	59		
C22	2	CR3	8	R13	24	R58	24	W3	60		
C23	2	CR4	8	R14	26	R59	35	W4	61		
C24	2	CR5	8	R15	27	R60	36	W5	62		
C25	2	CR6	8	R16	26	R61	37	W6	63		
C26	5	CR7	8	R17	27	R62	27	W7	64		
C27	2	CR8	8	R18	30	R63	38				
C28	2	CR9	8	R19	24	R64	24				
C29	2	CR10	8	R20	31	R65	39				
C30	5	CR11	8	R21	30	R66	40				
C31	6	CR12	8	R22	24	R67	41				
C32	5	CR13	8	R23	32	R68	35				
C33	5	CR14	8	R24	26	R69	42				
C34	5	CR15	8	R25	27	R70	43				
C35	5	CR16	8	R26	30	R71	41				
C36	2	CR17	8	R27	24	R72	42				
C37	5	L1	9	R28	31	T1	44				
C38	5	L2	10	R29	30	T2	44				
C39	2	L3	10	R30	24	T3	44				
C40	5	L4	11	R31	24	T4	44				
C41	4	L6	12	R32	24	T5	44				
C42	5	L7	13	R33	26	T6	45				
C43	5	L8	14	R34	27	TP1	46				
C44	5	L9	15	R35	26	TP2	46				
C45	4	L10	9	R36	24	TP3	46				

EL8GZ015

Figure 7. A10A2 Circuit Card Assembly (Sheet 2 of 2)

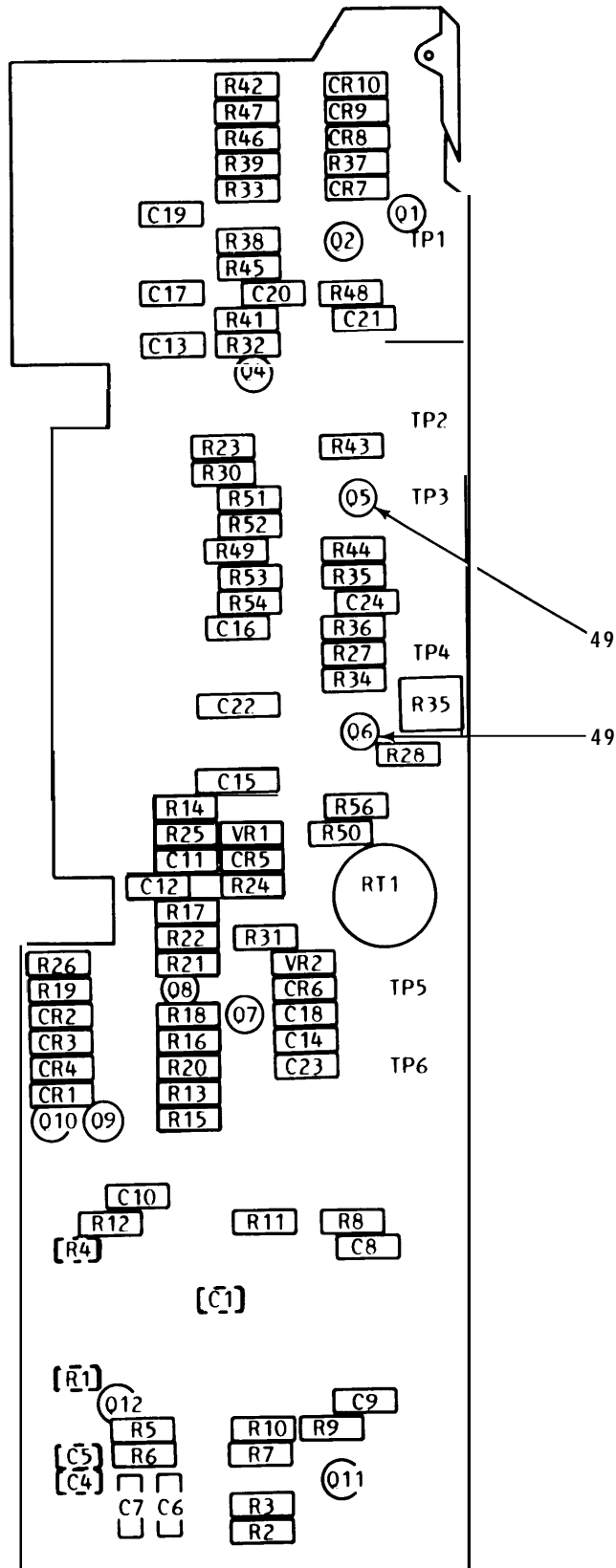
(1) ILLUSTRATION		(2)	(3)	(4)	(5)	(6) DESCRIPTION	(7)	(8)
(a) FIG NO	(b) ITEM NO	SMR CODE	NATIONAL STOCK NUMBER	FSCM	PART NUMBER	USABLE QUANTITY	M	QTY INC IN UNIT
<b>GROUP 0402 CIRCUIT CARD ASSEMBLY (A10A2)</b>								
7	1	PAHZZ	5910-00-113-5475	81349	M39003/01-3006	CAPACITOR, FIXED, ELE.....	EA	2
7	2	PAHZZ		56289	562CX5EFB251AG10	CAP, FXD, MICA.....	EA	19
7	3	PAHZZ	5910-01-057-8158	28480	0160-4084	CAPACITOR, FIXED, CER.....	EA	1
7	4	PAHZZ	5910-00-189-3178	81349	M39003-01-3058	CAPACITOR, FIXED, ELE.....	EA	7
7	5	PAHZZ	5910-00-048-6925	56289	C023F101F103ZS22 CD	CAP, FXD, CERAMIC.....	EA	8
7	6	PAHZZ	5910-00-007-2002	81349	M39003/01-3003	CAPACITOR, FIXED, ELE.....	EA	3
7	7	PAHZZ	5910-00-007-2004	81349	M39003-01-3088	CAPACITOR, FIXED, ELE.....	EA	2
7	8	PAHZZ	5961-00-840-5466	81349	JAN1N485B	SEMICONDUCTOR DEVIC.....	EA	17
7	9	PAHZZ	5950-01-013-5115	96906	MS14046-6	COIL, RADIO FREQUENC.....	EA	4
7	10	PAHZZ	5950-00-734-3940	96906	MS18130-8	COIL, RADIO FREQUENC.....	EA	2
7	11	PAHZZ		06560	15-4415-1M	CHUKE, RAD FREQ.....	EA	1
7	12	PAHZZ	5950-00-688-6048	99800	1537-08	COIL, RADIO FREQUENC.....	EA	1
7	13	PAHZZ		06560	15-4425-7K	COIL, RADIO FREQUENC.....	EA	1
7	14	PAHZZ	5950-00-701-5929	96906	MS18130-12	COIL, RADIO FREQUENC.....	EA	1
7	15	PAHZZ	5950-00-488-3056	96906	MS14046-4	COIL, RADIO FREQUENC.....	EA	1
7	16	PAHZZ	5950-00-855-3500	99800	1537-58	COIL, RADIO FREQUENC.....	EA	1
7	17	PAHZZ	5961-00-137-4608	04713	SPS5103	TRANSISTOR.....	EA	1
7	18	PAHZZ	5961-00-925-6324	04713	SM3197	TRANSISTOR.....	EA	2
7	19	PAHZZ	5961-00-336-1182	04713	MM8006	TRANSISTOR.....	EA	1
7	20	PAHZZ	5961-00-471-2984	28480	1853-0326	TRANSISTOR.....	EA	2
7	21	PAHZZ		81349	RNR70K51R1FM	RESISTOR, FIXED, FILM.....	EA	1
7	22	PAHZZ	5905-01-009-7560	24546	C3-1-8T0-511RG	RESISTOR, FIXED, FILM.....	EA	2
7	23	PAHZZ		24546	C3-1-8T00-10RG	RES, FXD, FILM.....	EA	1
7	24	PAHZZ	5905-00-426-7148	81349	RNC60K51R1FS	RESISTOR, FIXED FILM.....	EA	6
7	25	PAHZZ	5905-00-139-2305	28480	2100-1984	RESISTOR, VARIABLE, N.....	EA	1
7	26	PAHZZ	5905-00-233-0848	81349	RNC70K10R0FS	RES, FXD, FILM.....	EA	6
7	27	PAHZZ	5905-00-142-0931	81349	RNC60K5111FS	RESISTOR, FIXED, FILM.....	EA	6
7	28	PAHZZ		24546	C3-1-8T0-237RG	RES, FXD, FILM.....	EA	2
7	29	PAHZZ		24546	C3-1-8T00-23R7G	RES, FXD, FILM.....	EA	1
7	30	PAHZZ		24546	C3-1-8T0-178RG	RES, FXD, FILM.....	EA	4
7	31	PAHZZ		24546	C3-1-8T00-31R6G	RES, FXD, FILM.....	EA	2
7	32	PAHZZ	5905-00-214-2927	81349	RNC60K5110FS	RESISTOR, FIXED, FILM.....	EA	1
7	33	PAHZZ		24546	C3-1-8T0-422RG	RES, FXD, FILM.....	EA	4
7	34	PAHZZ		24546	C3-1-8T00-12R1G	RES, FXD, FILM.....	EA	2
7	35	PAHZZ	5905-00-448-9360	81349	RNC60J1002FS	RESISTOR, FIXED, FILM.....	EA	3
7	36	PAHZZ	5905-00-758-3408	81349	RNC60K2611FS	RESISTOR, FIXED, FILM.....	EA	1
7	37	PAHZZ	5905-00-451-7525	81349	RNC60K1471FS	RESISTOR, FIXED, FILM.....	EA	1
7	38	PAHZZ	5905-00-232-7800	81349	RNC60K1960FS	RESISTOR, FIXED, FILM.....	EA	1

(1) ILLUSTRATION		(2)	(3)	(4)	(5)	(6) DESCRIPTION	(7)	(8)
(a) FIG NO	(b) ITEM NO	SMR CODE	NATIONAL STOCK NUMBER	FSCM	PART NUMBER	USABLE SN CODE	EA	QTY INC IN UNIT
7	39	PAHZZ	5905-00-009-8033	81349	RNC60K1783FS	RES,FXD,FILM.....	EA	1
7	40	PAHZZ	5905-00-286-4543	81349	RNC60K3160FS	RESISTOR, FIXED, FILM.....	EA	1
7	41	PAHZZ	5905-00-432-6410	81349	RNC60K1001FS	RESISTOR, FIXED, FILM.....	EA	2
7	42	PAHZZ	5905-00-426-7096	81349	RNC60K4220FS	RESISTOR, FIXED, FILM.....	EA	2
7	43	PAHZZ		07716	CEA993T0-12RLF	RES, FXD, FILM.....	EA	1
7	44	PAHZZ		28480	08640-60355	TRANSFORMER, RF.....	EA	5
7	45	PAHZZ	5950-01-005-9932	28480	08640-80002	TRANSFORMER, RADIO F.....	EA	1
7	46	PAHZZ	5935-01-082-1966	28480	1251-0600	CONNECTOR, RECEPTACL.....	EA	4
7	47	PGHZZ	5962-01-043-9129	80009	156-0067-06	MICROCIRCUIT, LINEAR.....	EA	1
7	48	PGHZZ	5962-00-172-4913	97384	57988-90047	MICROCIRCUIT, DIGITA.....	EA	3
7	49	PGHZZ	5962-00-788-0298	01295	5N16150	MICROCIRCUIT, LINEAR.....	EA	1
7	50	PGHZZ	5962-00-496-2209	80009	156-0205-00	MICROCIRCUIT, DIGITA.....	EA	3
7	51	PAHZZ	5962-01-006-0177	28480	1820-0753	MICROCIRCUIT, DIGITA.....	EA	2
7	52	PGHZZ	5962-00-584-8970	04713	MC10105L	MICROCIRCUIT, DIGITA.....	EA	2
7	53	PAHZZ	5962-00-628-8129	28480	1820-0982	MICROCIRCUIT, LINEAR.....	EA	1
7	54	PAHZZ		28480	1820-2412	INTEGRATED CKT.....	EA	1
7	55	PAHZZ		28480	1820-1354	MICROCIRCUIT, DIGITA.....	EA	1
7	56	PGHZZ	5962-00-566-0983	04713	MC10231L	MICROCIRCUIT, DIGITA.....	EA	1
7	57	PAHZZ	5961-00-104-1395	81349	JANTX1N4370A	SEMICONDUCTOR DEVIC.....	EA	2
7	58	PAHZZ		98291	069-702-3266	CABLE ASSY, RF.....	EA	1
7	59	PAHZZ		98291	069-702-3493	CABLE ASSY, RF.....	EA	1
7	60	PAHZZ		98291	069-702-3494	CABLE ASSY, RF.....	EA	1
7	61	PAHZZ		98291	069-702-3495	CABLE ASSY, RF.....	EA	1
7	62	PAHZZ		98291	069-702-3496	CABLE ASSY, RF.....	EA	1
7	63	PAHZZ		28480	8120-2966	CABLE, RAD FREQ.....	IN	1
7	64	PAHZZ		98291	069-702-3498	CABLE ASSY, RF.....	EA	1





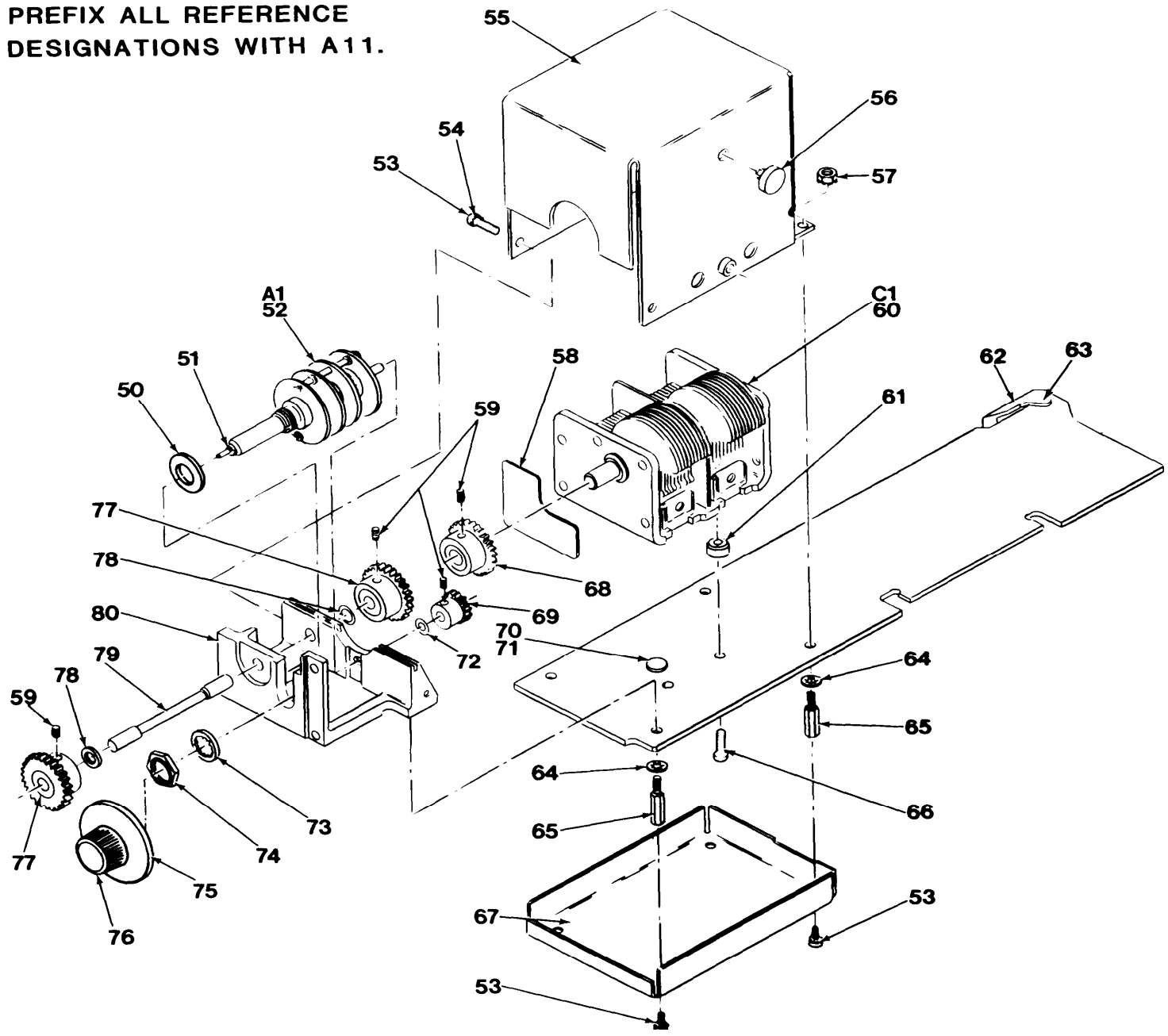
PREFIX ALL REFERENCE DESIGNATIONS WITH ALL.



EL8GZ016

Figure 8. All Circuit Card Assembly (Sheet 1 of 3)

PREFIX ALL REFERENCE  
DESIGNATIONS WITH A11.



TM11-6625-2780-24P-1

EL8GZ017

Figure 8. All Circuit Card Assembly (Sheet 2 of 3)

REF DES	ITEM NO	REF DES	ITEM NO	REF DES	ITEM NO	REF DES	ITEM NO	REF DES	ITEM NO	REF DES	ITEM NO
AI I	47	R1	22	R47	27						
CI	60	R2	23	R48	37						
C4	1	R3	24	R49	44						
C5	2	R4	22	R50	44						
C6	3	R5	25	R51	35						
C7	3	R6	26	R52	35						
C8	4	R7	27	R53	45						
C9	5	R8	27	R54	45						
CI 0	6	R9	28	R55	31						
CI I	7	R10	29	R56	31						
C12	8	RI I	30	RT1	46						
C13	9	R12	31	TP1	47						
C14	9	R13	32	TP2	47						
C15	10	R14	30	TP3	47						
C16	10	R15	33	TP4	47						
C17	9	R16	34	TP5	47						
C18	9	R17	31	TP6	47						
C19	11	R18	27	VR1	48						
C20	2	R19	35	VR2	48						
C21	12	R20	27	X05	49						
C22	13	R21	35	X06	49						
C23	13	R22	35								
C24	8	R23	36								
CR1	14	R24	36								
CR2	14	R25	31								
CR3	14	R26	37								
CR4	14	R27	38								
CR5	14	R28	39								
CR6	14	R30	36								
CR7	14	R31	36								
CR8	14	R32	38								
CR9	14	R33	23								
CR10	14	R34	40								
Q1	15	R35	41								
Q2	16	R36	42								
Q3	17	R37	32								
Q4	18	R38	30								
Q5	19	R39	43								
Q6	19	R40	41								
Q7	18	R41	33								
Q8	17	R42	34								
Q9	16	R43	27								
Q10	20	R44	27								
Q1 I	21	R45	31								
Q12	16	R46	27								

EL8GZ018

Figure 8. All Circuit Card Assembly (Sheet 3 of 3)

## SECTION II

TM 11-6625-2780-24P-1

(1) ILLUSTRATION		(2)	(3)	(4)	(5)	(6)	(7)	(8)
(a) FIG NO	(b) ITEM NO	SMR CODE	NATIONAL STOCK NUMBER	FSCM	PART NUMBER	DESCRIPTION  USABLE ON CODE	U M	QTY INC IN UNIT
<b>GROUP 05 CIRCUIT CARD ASSEMBLY (All)</b>								
8	1	PAHZZ	5910-00-726-8695	81349	CC22CH100C	CAP,FXD,CERAMIC.....	EA	1
8	2	PAHZZ	5910-00-887-9754	28480	O160-2262	CAP,FXD,CERAMIC.....	EA	2
8	3	PAHZZ		72136	RDM19F202F3S	CAP,FXD,MICA.....	EA	2
8	4	PAHZZ	5910-00-048-6925	56289	C023F101F103ZS22 C0	CAP,FXD,CERAMIC.....	EA	1
8	5	PAHZZ	5910-00-463-5960	28480	O121-0036	CAPACITOR,VARIABLE.....	EA	1
8	6	PAHZZ	5910-00-113-5475	81349	M39003/01-3006	CAPACITOR,FIXED,ELE.....	EA	1
8	7	PAHZZ	5910-00-463-5949	28480	O160-2204	CAPACITOR,FIXED,MIC.....	EA	1
8	8	PAHZZ	5910-00-106-6977	81349	CM10ED300G03	CAP,FXD,MICA.....	EA	2
8	9	PAHZZ	5910-00-144-4381	81349	M39003-01-3024	CAPACITOR,FIXED,ELE.....	EA	4
8	10	PAHZZ	5910-00-176-2641	81349	M39003-01-2971	CAPACITOR,FIXED,ELE.....	EA	2
8	11	PAHZZ	5910-00-807-7253	56289	150D226X9015B2	CAPACITOR,FIXED,ELE.....	EA	1
8	12	PAHZZ		72982	301-000COK0-109C	CAP,FXD,CERAMIC.....	EA	1
8	13	PAHZZ	5910-00-412-9235	81349	M39003-01-2981	CAPACITOR,FIXED,ELE.....	EA	2
8	14	PAHZZ	5961-00-762-3115	80131	1N3956	SEMICONDUCTOR DEVIC.....	EA	10
8	15	PAHZZ	5961-01-034-6540	81349	JAN2N3251	TRANSISTOR.....	EA	1
8	16	PAHZZ	5961-00-137-4608	04713	SPS5103	TRANSISTOR.....	EA	3
8	17	PAHZZ	5961-00-162-9698	28480	1853-0276	TRANSISTOR.....	EA	2
8	18	PAHZZ	5961-00-892-8706	80131	2N3904	TRANSISTOR.....	EA	2
8	19	PAHZZ	5961-00-990-5369	28480	1854-0003	TRANSISTOR.....	EA	2
8	20	PAHZZ	5961-00-904-2540	28480	1853-0020	TRANSISTOR.....	EA	1
8	21	PAHZZ	5961-00-222-6451	28480	1855-0062	TRANSISTOR.....	EA	1
8	22	PAHZZ		91637	HMF1-2T1-2155F	RES,FXD,FILM.....	EA	2
8	23	PAHZZ	5905-00-137-0805	81349	RNC60K1963FS	RESISTOR,FIXED,FILM.....	EA	2
8	24	PAHZZ	5905-00-189-2485	81349	RNC60K7872FS	RESISTOR,FIXED,FILM.....	EA	1
8	25	PAHZZ		81349	RNR60K1333FM	RES,FXD,FILM.....	EA	1
8	26	PAHZZ	5905-00-451-7414	81349	RNC60K2003FS	RESISTOR,FIXED,FILM.....	EA	1
8	27	PAHZZ	5905-00-471-2259	81349	RNC60H1000FS	RESISTOR,FIXED,FILM.....	EA	5
8	28	PAHZZ	5905-00-273-9720	81349	RNC60K8251FS	RESISTOR,FIXED,FILM.....	EA	1
8	29	PAHZZ	5905-00-259-4626	81349	RNC60K1622FS	RESISTOR,FIXED,FILM.....	EA	1
8	30	PAHZZ	5905-00-305-7265	81349	RNC60J2152BS	RESISTOR,FIXED,FILM.....	EA	3
8	31	PAHZZ	5905-00-448-9360	81349	RNC60J1002FS	RESISTOR,FIXED,FILM.....	EA	4
8	32	PAHZZ	5905-00-451-7528	81349	RNC60K3161FS	RESISTOR,FIXED,FILM.....	EA	2
8	33	PAHZZ	5905-00-317-9002	81349	RNC60J4640FS	RESISTOR,FIXED,FILM.....	EA	2
8	34	PAHZZ	5905-00-689-4720	81349	RNC60J5621FS	RESISTOR,FIXED,FILM.....	EA	2
8	35	PAHZZ	5905-00-227-5074	81349	RNC60K562FS	RESISTOR,FIXED,FILM.....	EA	5
8	36	PAHZZ		81349	RNC55J10R0BS	RESISTOR,FIXED,FILM.....	EA	4
8	37	PAHZZ	5905-00-273-9687	81349	RNC60K1472FS	RESISTOR,FIXED,FILM.....	EA	2
8	38	PAHZZ	5905-00-432-6410	81349	RNC60K1001FS	RESISTOR,FIXED,FILM.....	EA	2

## SECTION II

TM 11-6625-2780-24P-1

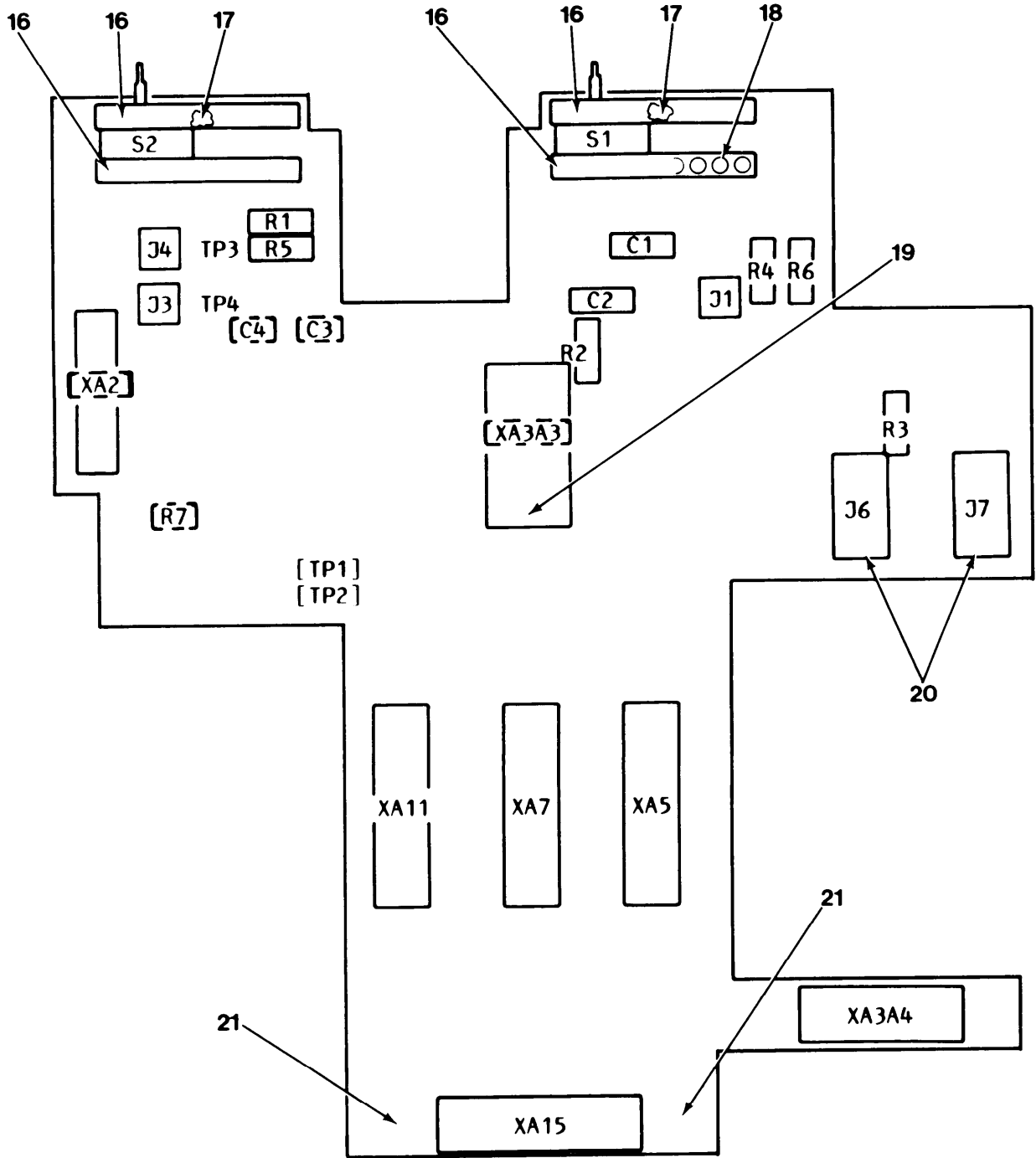
(1)		(2)	(3)	(4)	(5)	(6)	(7)	(8)
ILLUSTRATION		SMR CODE	NATIONAL STOCK NUMBER	FSCM	PART NUMBER	DESCRIPTION	QTY INC IN UNIT	EA
(a) FIG NO	(b) ITEM NO							
8	39	PAHZZ	5905-00-139-2307	32997	3329WT22-501	RESISTOR, VARIABLE, N.....	EA	1
8	40	PAHZZ	5905-00-452-0754	81349	RNC60K3481FS	RESISTOR, FIXED, FILM.....	EA	1
8	41	PAHZZ		32997	3329WT22-202	RESISTOR, VARIABLE, N.....	EA	2
8	42	PAHZZ	5905-00-491-8744	81349	RNC60H6191FS	RESISTOR, FIXED, FILM.....	EA	1
8	43	PAHZZ	5905-00-471-6254	81349	RNC60H2371FS	RESISTOR, FIXED, FILM.....	EA	1
8	44	PAHZZ	5905-00-758-3408	81349	RNC60K2611FS	RESISTOR, FIXED, FILM.....	EA	2
8	45	PAHZZ	5905-00-917-0586	07716	CEA993T0-6000F	RESISTOR, FIXED, FILM.....	EA	2
8	46	PAHZZ		28480	5080-1718	LAMP ASSEMBLY.....	EA	1
8	47	PAHZZ	5935-01-082-1966	28480	1251-0600	CONNECTOR, RECEPTAC.....	EA	6
8	48	PAHZZ	5961-00-458-4506	28480	1902-3059	SEMICONDUCTOR DEVIC.....	EA	2
8	49	PAHZZ	5999-00-110-1109	13103	7717-86DAP	MOUNTING PAD, ELECTR.....	EA	2
8	50	PAHZZ		28480	3050-0029	SHIM.....	EA	2
8	51	XBHZZ		79136	513-18-SMDR	RING, RETAINING.....	EA	1
8	52	PAHZZ		28480	08640-60185	SWITCH, AUDIO.....	EA	1
8	53	PAHZZ	5305-00-054-5653	96906	MS51957-19	SCREW, MACHINE.....	EA	2
8	54	PAHZZ	5310-00-058-3599	96906	MS35335-57	WASHER, LOCK.....	EA	2
8	55	XBHZZ		28480	08640-00006	COVER, OSC.....	EA	1
8	56	PAHZZ	5340-00-466-1730	28480	0403-0026	GLIDE, SPECIAL.....	EA	1
8	57	PAHZZ	5310-00-934-9748	96906	MS35649-244	NUT, PLAIN, HEXAGON.....	EA	2
8	58	XBHZZ		28480	08640-00087	INSULATOR, OSC.....	EA	1
8	59	PAHZZ	5305-00-717-6950	96906	MS51963-9	SET SCREW.....	EA	2
8	60	PAHZZ		28480	0121-0477	CAPACITOR, VARIABLE.....	EA	1
8	61	XBHZZ		28480	08640-20062	BUSHING, SLEEVE.....	EA	3
8	62	PAHZZ	5999-01-031-4796	28480	4040-0749	EXTRACTOR, ELECTRICA.....	EA	1
8	63	PAHZZ	5315-00-703-8313	72962	99-012-062-0250	PIN, SPRING.....	EA	1
8	64	PAHZZ	5310-00-550-3715	96906	MS35333-70	WASHER, LOCK.....	EA	2
8	65	XBHZZ		28480	08640-20090	SUPPORT, COVER.....	EA	2
8	66	XBHZZ		95987	N632-3-8	SCREW, MACHINE.....	EA	3
8	67	XBHZZ		28480	08640-00008	COVER, OSC.....	EA	1
8	68	PAHZZ		28480	1430-0764	GEAR.....	EA	1
8	69	PAHZZ		28480	08640-20205	GEAR, SPUR.....	EA	1
8	70	XBHZZ		98291	XL041762-9	TERMINAL, STUD.....	EA	2
8	71	XBHZZ		98291	1190107000009	BSHG, INSULATOR.....	EA	2
8	72	PAHZZ	5365-00-144-8430	28480	2190-0368	SHIM.....	EA	1
8	73	PAHZZ	5310-00-401-6931	78189	1920-02	WASHER, LOCK.....	EA	1
8	74	XBHZZ		73743	28200-10-101	NUT, PLAIN, HEX.....	EA	1
8	75	PAHZZ		28480	08640-20296	GEAR ASSEMBLY, DIAL.....	EA	1
8	76	PAHZZ		28480	0370-2446	KNOB.....	EA	1
8	77	PAHZZ		28480	1430-0763	GEAR.....	EA	2
8	78	PAHZZ	5365-00-988-8118	28480	3050-0032	SHIM.....	EA	3

(1) ILLUSTRATION		(2) SMR CODE	(3) NATIONAL STOCK NUMBER	(4) FSCM	(5) PART NUMBER	(6) DESCRIPTION	(7) USABLE ON CODE	(8) QTY INC IN UNIT
(a) FIG NO	(b) ITEM NO							
8	79	XBHZZ		28480	08640-20084	SHAFT,OSC.....	EA	1
8	80	XBHZZ		28480	08640-20218	HSG,GEAR UNIT.....	EA	1





PREFIX ALL REFERENCE  
DESIGNATIONS WITH A13.



EL8GZ020

Figure 9. A13 Electronic Component Assembly (Sheet 1 of 2)

TM11-6625-2780-24P-1

REF DES	ITEM NO	REF DES	ITEM NO	REF DES	ITEM NO	REF DES	ITEM NO	REF DES	ITEM NO	REF DES	ITEM NO
A13	56										
CI	1										
C2	1										
<b>C3</b>	1										
<b>C4</b>	1										
<b>J1</b>	2										
J3	2										
J4	2										
J6	3										
J7	3										
RI	4										
R2	5										
R3	6										
R4	7										
R5	7										
R6	8										
R7	5										
TP1	9										
TP2	9										
TP 3	9										
TP4	9										
S1	10										
S2	11										
XA2	12										
XA5	12										
XA7	12										
XA11	12										
XA15	13										
XA3A4	14										
XA3A3	15										

EL8GZ021

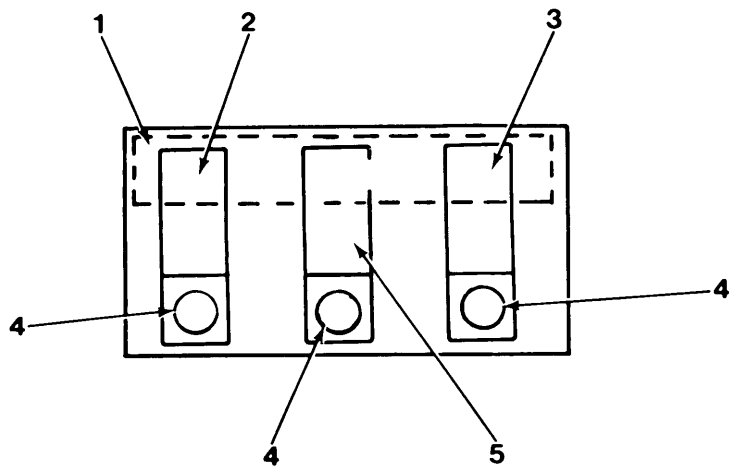
Figure 9. A13 Electronic Component Assembly (Sheet 2 of 2)

SECTION II

TM 11-6625-2780-24P-1

(1) ILLUSTRATION		(2)	(3)	(4)	(5)	(6) DESCRIPTION	(7)	(8)
(a) FIG NO	(b) ITEM NO	SMR CODE	NATIONAL STOCK NUMBER	FSCM	PART NUMBER		QTY	UNIT
<b>GROUP 06 ELECTRONIC COMPONENT ASSEMBLY A13</b>								
9	1	PAHZZ		56289	150D227X901052	CAP,FXD,ELCTLT.....	EA	4
9	2	PAHZZ	5935-00-497-5630	28480	1250-0257	CONNECTOR,ELECTRICA.....	EA	3
9	3	PAHZZ	5935-01-064-4093	06776	0002811	SOCKET,PLUG-IN ELEC.....	EA	2
9	4	PAHZZ		07716	CEC993TO-8600F	RES,FXD,FILM.....	EA	1
9	5	PAHZZ	5905-00-448-9360	81349	RNC60J1002FS	RESISTOR,FIXED,FILM.....	EA	2
9	6	PAHZZ		32997	3329HT22-202	RESISTOR,VARIABLE,N.....	EA	1
9	7	PAHZZ	5905-00-432-5846	81349	RNC60J6192FS	RESISTOR,FIXED,FILM.....	EA	2
9	8	PAHZZ	5905-00-255-9298	81349	RNC60K7870FS	RES,FXD,FILM.....	EA	1
9	9	PAHZZ	5935-01-082-1966	28480	1251-0600	CONNECTOR,RECEPTACL.....	EA	4
9	10	PAHZZ	5930-01-025-7185	28480	08640-60152	SWITCH,SLIDE.....	EA	1
9	11	PAHZZ	5935-01-025-7186	28480	08640-60153	SWITCH,SLIDE.....	EA	1
9	12	PAHZZ	5935-00-568-3605	95354	91-6915-0702-00	CONNECTOR,RECEPTACL.....	EA	4
9	13	PAHZZ	5935-00-405-7720	71785	252-15-30-300	CONNECTOR,RECEPTACL.....	EA	1
9	14	PAHZZ		23880	SCM602-1HP	CONNECTOR,RECEPTACL.....	EA	1
9	15	PAHZZ	5935-00-004-6303	28480	5060-0109	CONNECTOR,ELECTRICA.....	EA	1
9	16	PAHZZ		28480	08640-40063	GUIDE.....	EA	4
9	17	PAHZZ	5340-01-008-6415	28480	5020-3440	CLIP,RETAINING.....	EA	2
9	18	PAHZZ	5320-00-879-6607	96906	MS16535-82	RIVET,TUBULAR.....	EA	12
9	19	PAHZZ		28480	08640-20211	GUIDE.....	EA	2
9	20	XBHZZ		06776	0504376	CLIP,RETAINING.....	EA	2
9	21	PAHZZ	5340-00-466-1730	28480	0403-0026	GLIDE,SPECIAL.....	EA	2

PREFIX ALL REFERENCE  
DESIGNATIONS WITH **A15.**



EL8GZ022

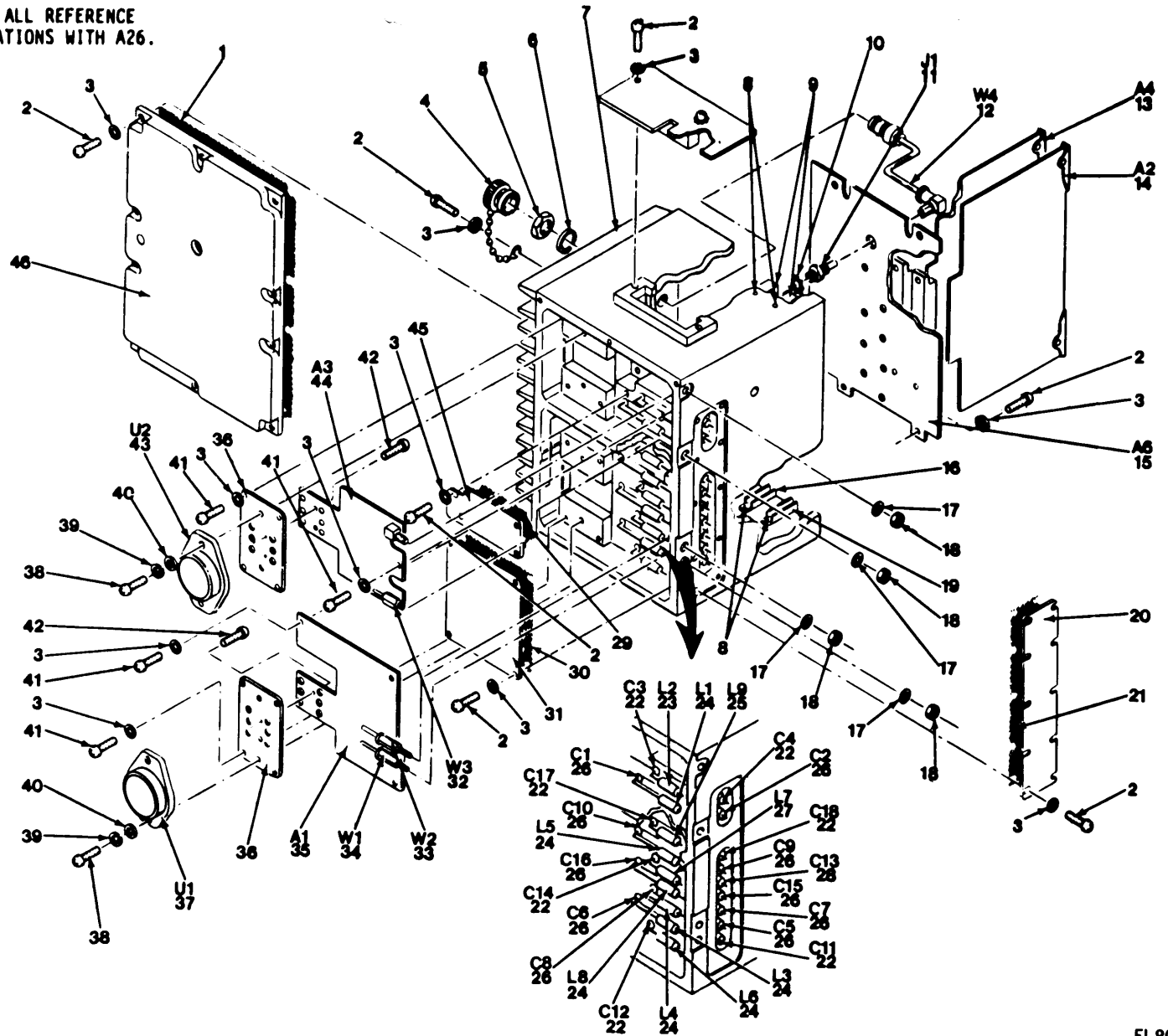
Figure 10. A15 Circuit Card Assembly

SECTION II

TM 11-6625-2780-24P-1

(1) ILLUSTRATION		(2)	(3)	(4)	(5)	(6)	(7)	(8)
(a) FIG NO	(b) ITEM NO	SMR CODE	NATIONAL STOCK NUMBER	FSCM	PART NUMBER	DESCRIPTION  USABLE ON CODE	U M	QTY INC IN UNIT
<b>GROUP 07 CIRCUIT CARD ASSEMBLY (A15)</b>								
10	1	PAHZZ	5935-01-029-2463	71785	252-12-30-032	CONNECTOR, RECEPTACL.....	EA	1
10	2	XBHZZ		28480	0403-0154	GUIDE, CKT CARD.....	EA	1
10	3	XBHZZ		28480	0403-0153	GUIDE, CKT CARD.....	EA	1
10	4	PAHZZ	5320-00-879-6606	96906	MS16535-154	RIVET, TUBULAR.....	EA	1
10	5	XBHZZ		28480	0403-0155	GUIDE, CKT CARD.....	EA	1

PREFIX ALL REFERENCE DESIGNATIONS WITH A26.



44

EL8GZ023

Figure 11. Radio Frequency Amplifier Assembly (A26)

## SECTION II

TM 11-6625-2780-24P-1

(1) ILLUSTRATION		(2)	(3)	(4)	(5)	(6)	(7)	(8)
(a) FIG NO	(b) ITEM NO	SMR CODE	NATIONAL STOCK NUMBER	FSCM	PART NUMBER	DESCRIPTION	USABLE CN CODE	QTY INC IN UNIT
						GROUP 08 RADIO FREQUENCY AMPLIFIER ASSY (A26)		
11	1	PAHZZ	5330-00-615-1496	28480	8160-0224	GASKET.....	EA	1
11	2	PAHZZ	5305-00-054-5649	96906	MS51957-15	SCREW, MACHINE.....	EA	10
11	3	PAHZZ	5310-00-058-3599	96906	MS35335-57	WASHER, LOCK.....	EA	10
11	4	PAHZZ	5935-00-572-5660	24931	28PC107-1	CAP, ELECTRICAL.....	EA	1
11	5	PAHZZ	5310-00-454-1335	28480	2950-0035	NUT, PLAIN, HEXAGON.....	EA	1
11	6	PAHZZ	5310-00-778-2758	96906	MS35333-112	WASHER, LOCK.....	EA	1
11	7	XBHZZ		28480	5021-0106	HOUSING, HT SK.....	EA	1
11	8	PAHZZ	5320-00-879-6606	96906	MS16535-154	RIVET, TUBULAR.....	EA	2
11	9	XBHZZ		28480	0403-0153	GUIDE, CKT CARD.....	EA	2
11	10	PAHZZ	5310-00-869-9576	96906	MS35338-157	WASHER, LOCK.....	EA	1
11	11	PAHZZ	5935-00-428-2944	28480	1250-0829	CONNECTOR, RECEPTAC.....	EA	1
11	12	PAHZZ	6625-00-525-5263	28480	8120-1892	CABLE ASSEMBLY, RADI.....	EA	1
11	13	PAHZZ		28480	08640-60351	CIRCUIT CARD ASSEMB.....	EA	1
11	14	PAHZZ	6625-00-521-2604	28480	08640-60014	CIRCUIT CARD ASSEMB.....	EA	1
11	15	PAHZZ	6625-00-521-2603	28480	08640-60011	CIRCUIT CARD ASSEMB.....	EA	1
11	16	XBHZZ		28480	0403-0157	GUIDE, CKT CARD.....	EA	1
11	17	PAHZZ	5310-00-019-0672	96906	MS35333-107	WASHER, LOCK.....	EA	1
11	18	PAHZZ	5310-00-151-8877	98291	3002-18	NUT, PLAIN, HEXAGON.....	EA	1
11	19	XBHZZ		28480	0403-0156	GUIDE, CKT CARD.....	EA	1
11	20	XBHZZ		28480	08640-00012	COVER, ACCESS.....	EA	1
11	21	PAHZZ		28480	8160-0218	GASKET.....	EA	1
11	22	PAHZZ		72982	2499-003K5F101M	CAP, FXD, CERAMIC.....	EA	5
11	23	PAHZZ	5950-01-004-7262	96906	MS14046-7	CHOKE, RAD FREQ.....	EA	1
11	24	PAHZZ	5950-01-013-5115	96906	MS14046-6	COIL, RADIO FREQUENC.....	EA	5
11	25	PAHZZ	5950-00-701-5929	96906	MS18130-12	COIL, RADIO FREQUENC.....	EA	1
11	26	PAHZZ		72982	2499008X5V0-502Z	CAP, FXD, CERAMIC.....	EA	10
11	27	PAHZZ	5950-00-807-6050	99800	1537-38	COIL, RADIO FREQUENC.....	EA	1
11	28	PAHZZ	5910-00-487-7558	59660	2499-003U2M560M	CAPACITOR, FIXED, CER.....	EA	1
11	29	PAHZZ		28480	8160-0223	GASKET.....	EA	1
11	30	PAHZZ		28480	8160-0222	GASKET.....	EA	1
11	31	XBHZZ		28480	08640-00013	COVER, AMPLIFIER.....	EA	1
11	32	PAHZZ		98291	069-702-3492	CABLE ASSY, RF.....	EA	1
11	33	PAHZZ	6625-00-525-5256	28480	8120-1887	CABLE, RADIO FREQUEN.....	EA	1
11	34	PAHZZ	6625-00-528-9165	28480	8120-1889	CABLE ASSEMBLY, RADI.....	EA	1
11	35	PAHZZ	6625-00-521-2624	28480	08640-60043	CIRCUIT CARD ASSEMB.....	EA	1
11	36	PAHZZ		28480	08640-00002	HEAT SINK, ELECTRICA.....	EA	1
11	37	PAHZZ	5962-01-006-4648	28480	08640-67002	MICROCIRCUIT, LINEAR.....	EA	1
11	38	PAHZZ	5305-00-054-6655	96906	MS51957-31	SCREW, MACHINE.....	EA	2

## SECTION II

TM 11-6625-2780-24P-1

(1) ILLUSTRATION		(2) SMR CODE	(3) NATIONAL STOCK NUMBER	(4) FSCM	(5) PART NUMBER	(6) DESCRIPTION	(7) U M	(8) QTY INC IN UNIT
(a) FIG NO	(b) ITEM NO					USABLE ON CODE		
11	39	PAHZZ	5310-00-839-3770	96906	MS35340-41	WASHER, LOCK.....	EA	2
11	40	PAHZZ	5310-00-439-5941	28480	3050-0066	WASHER.....	EA	2
11	41	PAHZZ	5305-00-054-5648	96906	MS51957-14	SCREW, MACHINE.....	EA	8
11	42	PAHZZ	5305-00-054-5636	96906	MS51957-2	SCREW, MACHINE.....	EA	4
11	43	PAHZZ	5961-01-006-4649	28480	08640-67003	MICROCIRCUIT, LINEAR.....	EA	1
11	44	PAHZZ	6625-00-521-2605	28480	08640-60016	CIRCUIT CARD ASSEMB.....	EA	1
11	45	XBHZZ		28480	08640-00018	COVER, FILTER.....	EA	1
11	46	XBHZZ		28480	08640-20264	COVER, BOTTOM.....	EA	1



STOCK NUMBER	FIGURE NO.	ITEM NO.	STOCK NUMBER	FIGURE NO.	ITEM NO.
5935-00-004-6303	1	100	5365-00-144-8430	8	72
5935-00-004-6303	9	15	5305-00-144-9078		8
5999-00-004-7688	1	49	5310-00-151-8877	3	39
5910-00-007-2002	6	50	5310-00-151-8877	11	18
5910-00-007-2002	7	6	596 1-00-162-9698	8	17
5910-00-007-2004	7	7	5930-00-164-0850	1	145
6156-00-008-5075	i	3	5962-00-172-4913	7	48
5905-00-009-8033	7	39	59 10-00-176-2641	8	10
5910-00-018-0918	6	15	5905-00-189-2485	8	24
5310-00-019-0670	4	3	5910-00-189-3178	7	4
5310-00-019-0672	1	51	596 1-00-199-6008	1	29
5310-00-019-0672	11	17	5905-00-214-2927	7	32
5310-00-022-8847	1	38	5961-00-222-6451	8	21
5999-00-03 1-4796	8	62	5905-00-227-5074	8	35
5310-00-045-5206	1	142	5905-00-232-7800	7	38
5910-00-048-6925	6	1	5905-00-233-0848	7	26
5910-00-048-6925	7	5	5910-00-234-9817	6	49
5910-00-048-6925	8	4	5905-00-2559298	9	8
5920-00-054-0173	1	82	5905-00-259-4626	8	29
5305-00-054-5636	11	42	5905-00-273-9687	8	37
5305-00-054-5637	1	113	5905-00-273-9720	8	28
5305-00-054-5637	3	29	5920-00-280-4960	1	42
5305-00-054-5646	5	12	5905-00-286-4543	7	40
5305-00-054-5646	6	95	5905-00-305-7265	8	30
5305-00-054-5648	1	61	5905-00-317-9002	8	33
5305-00-054-5648	3	22	596 1-00-336-1182	7	19
5305-00-054-5648	5	6	5305-00-400-8531	1	95
5305-00-054-5648	11	41	5305-00-400-8531	5	8
5305-00-054-5649	1	70	5310-00-401-6931	8	73
5305-00-054-5649	3	27	59 10-00-401-7891	6	46
5305-00-054-5649	4	37	5935-00-405-7720	6	85
5305-00-054-5649	11	2	5935-00-405-7720	9	13
5305-00-054-5650	6	99	5910-00-406-9675	6	31
5305-00-054-5651	1	83	59 10-00-407-0255	6	10
5305-00-054-5651	3	19	6625-00-412-1204	1	176
5305-00-054-5651	5	5	5910-00-412-9235	8	13
5305-00-054-5653	1	105	5905-00-426-7096	7	42
5305-00-054-5653	2	24	5905-00-426-7148	7	24
5305-00-054-5653	3	34	5935-00-428-2944	11	11
5305-00-054-5653	3	42	5905-00-432-5846	9	7
5305-00-054-5653	8	53	5905-00-432-6410	7	41
5305-00-054-5655	3	20	5905-00-432-6410	8	38
5305-00-054-6651	1	68	5340-00-435-5340	1	166
5305-00-054-6652	i	118	5310-00-439-5941		40
5305-00-054-6654	1	58	5935-00-446-8768	6	86
5305-00-054-6655	4	22	5905-00-448-9360	7	35
5305-00-054-6655	11	38	5905-00-448-9360	8	31
5305-00-054-6658	4	34	5905-00-448-9360	9	5
5305-00-054-6660	4	7	5910-00-451-3194	3	46
5305-00-054-6667	1	164	5905-00-451-74 14	8	26
5305-00-054-6668	1	136	5905-00-451-7525	7	37
5305-00-054-6681	1	153	5905-00-451-7528	8	32
5310-00-058-3599	1	62	5905-00-452-0754	8	40
5310-00-058-3599	3	23	5310-00-454-1335	11	5
5310-00-058-3599	4	36	596 1-00-458-4506	8	48
5310-00-058-3599	5	7	5310-00-460-3056	1	40
5310-00-058-3599	6	91	59 10-00-463-5949	6	24
5310-00-058-3599	8	54	59 10-00-463-5949	8	7
5310-00-058-3599	11	3	5910-00-463-5960	8	5
5305-00-059-3656	1	134	5340-00-466-1730	1	67
5305-00-066-7326	1	97	5340-00-466-1730	8	56
5305-00-066-7328	1	167	5340-00-466-1730	9	21
5910-00-075-9238	6	41	5995-00-466-9158	1	123
4130-00-095-3666	1	47	5995-00-466-9164	1	122
5910-00-103-7897	6	47	5995-00-466-9189	1	124
5961-00-104-1395	7	57	5905-00-471-2259	8	27
5910-00-106-6977	6	35	5961-00-471-2984	7	20
5910-00-106-6977	8	8	5905-00-471-6254	8	43
5999-00-110-1109	8	49	59 10-00-487-7558	11	28
5910-00-113-5475	7	i	5950-00-488-3056	7	15
5910-00-113-5475	8	6	5905-00-491-8744	8	42
5910-00-127-1848	1	74	5340-00-494-7440	1	32
5905-00-137-0805	8	23	5962-00-496-2209	7	50
5961-00-137-4608	7	17	5935-00-497-5630	9	2
5961-00-137-4608	8	16	3020-00-518-1139	4	13
5910-00-138-5048	6	39	3020-00-518-1157	4	10
5905-00-139-2305	7	25	3020-00-518-1169	4	15
5905-00-139-2307	8	39	3020-00-518-1170	2	2
5905-00-142-0931	7	27	3020-00-519-4487	2	4
5910-00-144-4381	8	9	3020-00-519-4487	4	29

STOCK NUMBER	FIGURE NO.	ITEM NO.	STOCK NUMBER	FIGURE NO.	ITEM NO.
6625-00-521-2597	1	72	5305-00-765-4252	1	184
6625-00-521-2598	1	89	5305-00-765-4257	1	173
6625-00-521-2599	1	92	5305-00-770-2579	1	101
6625-00-521-2600	1	90	5910-00-772-6726	6	4
6625-00-521-2603	11	15	5910-00-776-4174	6	14
6625-00-521-2604	11	14	5920-00-777-6473		87
6625-00-521-2605	11	44	5310-00-778-2758	i	6
6625-00-521-2606	5	17	5962-00-788-0298	7	49
6625-00-521-2607	3	24	5910-00-789-6956	6	43
6625-00-521-2624	11	3s	6625-00-806-8799	4	6
6625-00-521-2803	6	84	5950-00-807-6050	ii	27
6625-00-521-2809	6	83	5910-00-807-7253	8	11
6625-00-525-5256	11	33	5910-00-813-8645	6	6
6625-00-525-5263	11	12	5910-00-828-0808	6	2
6625-00-528-8978	1	86	5910-00-831-8690	6	3
6625-00-528-9165	11	34	5310-00-839-3770	4	9
5310-00-543-2410	1	106	5310-00-839-3770	11	39
5310-00-543-4652	1	112	5961-00-840-5466	7	8
5310-00-550-0284	.	65	5950-00-855-3500	7	16
5310-00-550-0286	i	174	5935-00-856-8794	6	52
5310-00-550-3350	3	12	5310-00-869-9576	11	10
5310-00-550-3715	8	24	5320-00-879-6606	10	4
5950-00-563-3122	6	64	5320-00-879-6606	ii	8
5950-00-563-3123	6	68	S 320-00-879-6607	9	18
5950-00-563-3124	6	57	5310-00-880-5976	1	35
5950-00-563-3126	6	64	5910-00-883-6281	6	34
5950-00-563-3130	6	59	5935-00-885-8598	1	130
5950-00-563-3134	6	58	5910-00-887-9754	6	44
5950-00-563-3136	6	62	5910-00-887-9754	8	2
5950-00-563-3137	6	71	5961-00-892-8706	8	18
5950-00-563-3138	6	66	5920-00-901-7419	1	91
5950-00-563-3142	6	73	5920-00-901-9938	1	88
5950-00-564-4146	6	67	6625-00-903-0348	1	180
5950-00-564-4147	6	54	5910-00-903-8336	6	40
5950-00-564-4149	6	63	5961-00-904-2940	8	20
5950-00-564-4150	6	60	5320-00-904-4136	5	18
5950-00-564-4151	6	61	5950-00-905-8585	3	44
5962-00-566-0983	7	72	6625-00-911-7214	1	71
5935-00-568-3605	9	56	5905-00-917-0586	8	4s
5310-00-566-8597	3	12	5961-00-925-6324	7	18
5310-00-568-8597	4	41	5310-00-929-6395	1	34
5305-00-570-0456	3	23	5310-00-934-9748	4	4
5950-00-572-5513	6	32	5310-00-934-9748	8	57
5935-00-572-5660	11	65	5310-00-934-9761	1	36
5961-00-577-0557	1	4	5320-00-954-0113	1	129
5961-00-579-1681	2	48	5950-00-961-9600	6	78
5950-00-584-0107	6	8	5305-00-978-9348	1	55
5962-00-584-8970	7	76	5910-00-983-2623	6	48
5935-00-597-1292	1	52	5310-00-983-8483	1	60
5330-00-615-1496	11	109	5365-00-988-8118	8	78
5310-00-616-3554	1	i	5961-00-990-5369	8	19
5310-00-616-3555	1	59	5305-00-993-9189	3	4
5962-00-628-8129	7	54	5910-00-998-5447	6	16
5310-00-655-9505	1	53	5950-01-004-7262	11	23
5310-00-655-9505	2	84	5950-01-005-9932	7	4s
5310-00-655-9505	3	10	5962-01-006-0177	7	51
5310-00-655-9505	5	18	5945-01-006-1410	6	53
5310-00-655-9505	6	2	5962-01-006-4648	11	37
5950-00-688-6048	7	98	5962-01-006-4649	11	43
5905-00-689-4720	8	12	5950-01-0068323	6	79
5950-00-701-5929	7	34	5962-01-006-8383	3	33
5315-00-703-8313	8	14	5340-01-008-6415	9	17
5305-00-717-6949	2	25	590501-009-7560	7	22
5305-00-717-6950	1	63	5950-01-013-5115	7	9
5305-00-717-6950	3	3	5950-01-013-5115	11	24
5305-00-719-5064	1	16	5930-01-025-7185	9	10
5320-00-721-5244	1	10	5930-01-025-7186	9	11
5310-00-725-198s	3	11	5910-01-027-9496	1	75
5910-00-726-8695	6	4s	5935-01-029-2463	10	1
5910-00-726-8695	8	1	5961-01-034-6540	8	15
5950-00-734-3940	7	10	5910-01-034-9281	6	11
5905-00-758-3408	7	36	5910-01-043-6897	6	5
5905-00-758-3408	8	44	5910-01-043-6898	6	2s
6625-00-760-9521	1	182	5962-01-043-9129	7	47
5961-00-762-3115	8	14	5910-01-057-8158	7	3
5305-00-763-6962	1	64	5910-01-058-9579	6	12
			5365-01-062-3630	1	139
			6625-01-063-6797	1	148
			5935-01-064-4093	9	3
			6625-01-081-0616	6	104

STOCK NUMBER	FIGURE NO.	ITEM NO.	STOCK NUMBER	FIGURE NO.	ITEM NO.
5935-O 1-082-1966	7	46	5935-01-082-1966	9	9
5935-o 1-082-1966	8	47	5930-01-099-2912	1	150

FSCM	PART NUMBER	FIGURE NO.	ITEM NO.	FSCM	PART NUMBER	FIGURE NO.	ITEM NO.
80204	A 1H	1	11	96906	MS35333-71	1	54
99934	A 201-34A	1	151	96906	MS35335-29	1	59
2445 4	A 7039589P1	3	12	96906	MS35335-57	1	62
24454	A 7039589P1	4	24	96906	MS35335-57	3	23
81349	CC22CH100C	6	45	96906	MS35335-57	4	36
81349	CC22CH100C	8	1	96906	MS35335-57	5	7
07716	CEA 993T0-12R1F	7	43	96906	MS35335-57	6	91
07716	CEA 993T0-6000F	8	4s	96906	MS35335-57	8	54
07716	CEC 993T0-8600F	9	4	96906	MS35335-57	11	3
81349	CMR 05E620G0DR	6	25	96906	MS35336-15	1	174
81349	CMR 05F131G0DR	6	5	96906	MS35336-9	1	65
a1349	CMR 06F302FOOR	6	11	96906	MS35338-136	1	34
81349	CM10ED300G03	6	35	96906	MS35338-157	11	10
81349	CM10ED300G03	8	8	96906	MS35338-40	1	106
81349	CM10ED390G03	6	41	96906	MS35340-40	1	8 4
81349	CM10FD241G03	6	16	96906	MS35340-40	2	10
81349	CM10FD391G03	6	15	96906	MS35340-40	3	18
56289	C023F 101F 103Z S22CD	6	1	96906	MS35340-40	5	
56289	C023F 101F 103Z S22CD	7	5	96906	MS35340-40	6	9x
56289	C023F 101F 103Z S22CD	8	4	96906	MS35340-41	4	9
78553	C11351-632-248	1	181	96906	MS35340-41	11	39
24546	C3-1-8T0-178RG	7	30	96906	MS35649-244	4	4
24546	C3-1-8T0-237RG	7	28	96906	MS35649-244	8	57
24546	C3-1-8T0-422RG	7	33	96906	MS35649-264	1	36
24546	C3-1-8T0-511RG	7	22	96906	MS51957-121	1	95.
24546	C 3-1- 8T00-10RG	7	23	96906	MS51957-121	2	9
24546	C3-1-8T00-12RIG	7	34	96906	MS51957-121	5	8
24546	C3-1-8T00-23R 7G	7	29	96906	MS51957- 14	1	61
24546	C3-1-8T00-31R6G	3	31	96906	MS51957- 14	2	13
72136	DM 1% 75 1F 300VOC	6	6	96906	MS51957- 14	3	22
81349	FM01-125V-3A	1	87	96906	MS51957-14	5	6
81349	FM01-125V3-4A	1	91	96906	MS51957- 14	11	41
81349	FM01A 125V 2A	1	82	96906	MS51957-15	1	70
81349	F02A250V2A	1	42	96906	MS51957-15	2	20
05245	F2058	1	44	96906	MS51957-15	3	27
71400	GMW1	1	88	96906	MS51957-15	4	37
91637	HMF 1-2T1-2155F	8	22	96906	MS51957-15	11	
81349	JANTXIN4370A	7	57	96906	MS51957-16	6	98
81349	JAN 1N4858	7	8	96906	MS51957-17	1	a3
81349	JAN2N3055	1	29	96906	MS51957-17	3	19
81349	JAN2N3251	8	15	96906	MS51957-17	5	5
16428	KH7081	1	3	96906	MS51957-19	1	105
04713	MC10105L	7	52	96906	MS51957-19	2	24
04713	MC10231L	7	56	96906	MS51957-19	3	34
76211	MEC 5	6	97	96906	MS51957-19	3	42
04713	MM8006	7	19	96906	MS51957-19	8	53
96906	MS14046-4	7	15	96906	MS51957-2	11	42
96906	MS140466	7	9	96906	MS51957-21	3	20
96906	MS14046-6	11	24	96906	MS51957-27	1	68
96906	MS140467	11	23	96906	MS51957-28	1	118
96906	MS15795-806	1	35	96906	MS51957-3	1	113
96906	MS15795907	1	142	96906	MS51957-3	3	29
96906	MS16535-154	10	4	96906	MS51957-30	1	58
96906	MS16535-154	11	8	96906	MS51957-31	4	22
96906	MS16535-155	1	129	96906	MS51957-31	11	38
96906	MS16535-77	1	108	96906	MS51957-34	4	34
96906	MS16585-82	9	18	96906	MS51957-36	4	7
96906	MS16997-20	1	55	96906	MS51957-42	1	164
96906	MS18130-12	7	14	96906	MS51957-43	1	136
96906	MS18130-12	11	25	96906	MS51957-54	1	153
96906	MS18130-8	7	10	96906	MS51958-60	1	134
96906	MS24693C2	3	40	96906	MS51959-15	1	101
96906	MS24693C24	1	97	96906	MS51959-27	1	64
96906	MS24693C27	1	167	96906	MS51959-30	1	33
96906	MS27183-5	1	60	96906	MS51959-42	1	184
96906	MS35206330	4	2	96906	MS51959-43	1	173
96906	MS35333-106	4	3	96906	MS51963-10	2	3
96906	MS35333-107	1	51	96906	MS51963-9	1	16
96906	MS35333-107	11	17	96906	MS51963-9	3	10
96906	MS35333-110	1	38	96906	MS51963-9	4	11
96906	MS35333-112	11	6	96906	MS51963-9	8	59
96906	MS35333-69	1	112	8 1349	M24243/1-8403	5	18
96906	MS35333-70	8	64	8 1349	M39003-01-2971	8	10

FSCM	PART NUMBER	FIGURE ITEM		FSCM	PART NUMBER	FIGURE ITEM	
		N	O			NO.	NO.
81349	M39003-01-2981	8	13	06776	0002611	9	3
81349	M39003-01-3024	8	9	28480	00335-20034	6	101
81349	M39003-01-3058	1	4	28817	01-0101-4075	5	22
81349	M39003-01-3088	1	7	06560	010175-021J	6	10
81349	M39003/01-3003	6	50	28480	0121-0036	8	5
81349	M39003/01-3003	1	6	28480	0121-0477	8	60
81349	M39003/01-3006	1	1	28480	0140-0220	6	4
81349	M39003/01-3006	8	6	28480	0160-0341	b	14
95987	N632-3-B	8	66	28480	0160-2204	6	24
00853	RDM15E510J3S	6	33	28480	0160-2204	8	7
72136	RDM15E800G3S	6	32	28480	0160-2262	6	44
72136	RDM15F111F3C	6	26	28480	0160-2262	8	2
72136	RDM15F161J3C	6	23	28480	0160-2263	6	4b
72136	RDM15F181G3C	6	2	28480	0160-2306	6	34
72136	RDM15F321F3C	6	6	28480	0160-2307	6	31
72136	RDM15F351F1C	6	37	28480	0160-2357	3	46
72136	RDM15F361F3S	b	13	28480	0160-3046	b	39
72136	RDM15F401F3S	6	36	28480	0160-4048	1	75
72136	RDM15F431J3C	6	17	28480	0160-4084	7	3
72136	RDM15F481F3S	6	31	28817	02-0101A170	1	155
72136	RDM15F501F3C	6	30	28817	02-0101A650-	1	156
72136	RDM15F701F1C	6	29	28817	02-0119-3493	2	17
72136	RDM15F801F3S	b	27	28480	0340-0486	1	128
72136	RDM15F910F3C	6	22	28480	0370-2378	1	22
72136	RDM15F95851S	6	28	28480	0370-2379	1	25
72136	RDM19E102F5S	6	21	28480	0370-2381	1	26
72136	RDM19F142F1C	b	19	28480	0370-2445	1	18
72136	RDM19F1470F1C	6	20	28480	0370-2446	8	76
72136	RDM19F1916F1S	6	18	28480	0370-2623	1	15
72136	RDM19F202F1C	6	12	28480	0370-2916	1	17
72136	RDM19F202F3S	8	3	28480	0370-3035	1	21
72136	RDM19F2780G3C	6	PO	28480	0370-3037	1	20
72136	RDM19F322F1S	6	7	28480	0380-0004	4	139
72136	RDM19F392F5C	6	9	28480	0380-0013	4	17
72136	RDM19F402F1C	6	8	28480	0403-0026	1	67
81349	RNC55J1OR08S	6	80	28480	0403-0026	8	56
81349	RNC55J1OR08S	8	36	28480	0403-0026		21
81349	RNC60H1000FS	8	27	28480	0403-0153	1X	3
81349	RNC60H2371FS	8	43	28480	0403-0153	11	9
81349	RNC60H6191FS	8	42	28480	04030154	10	2
81349	RNC60J1002FS	7	35	28480	0403-0155	10	5
81349	RNC60J1002FS	8	31	28480	0403-0156	5	19
81349	RNC60J1002FS	9	5	28480	0403-0156	11	19
81349	RNC60J2152BS	8	30	28480	0403-0157	5	20
81349	RNC60J4640FS	8	33	28480	0403-0157	11	16
81349	RNC60J5621FS	8	34	28480	0403-0158	5	21
81349	RNC60K6192FS	9	7	06776	0504316	9	20
81349	RNC60K1001FS	7	41	83385	0516-0005	3	8
81349	RNC60K1001FS	a	38	28480	0590-1011	1	8
81349	RNC60K1471FS	7	37	28480	0624-0078	1	46
81349	RNC60K1472FS	8	31	28480	0624-0206	1	78
81349	RNC60K1622FS	8	29	28480	0624-0267	1	52
81349	RNC60K1783FS	7	39	98291	069-702-3265	1	126
81349	RNC60K1960FS	1	38	98291	069-702-3266	7	58
81349	RNC60K1963FS	8	23	98291	069-702-3485	1	161
81349	RNC60K2003FS	8	26	98291	069-702-3486	1	120
81349	RNC60K2611FS	7	36	98291	069-702-3489	1	127
81349	RNC60K2611FS	8	44	98291	069-702-3490	1	114
81349	RNC60K3160FS	1	40	98291	069-702-3492	11	32
81349	RNC60K3161FS	8	32	98291	069-702-3493	7	59
81349	RNC60K3481FS	8	40	98291	069-702-3494	1	60
81349	RNC60K4220FS	1	42	98291	069-702-3495	1	61
81349	RNC60K51R1FS	7	24	98291	069-702-3496	7	62
81349	RNC60K5110FS	1	32	98291	069-702-3498	7	64
81349	RNC60K5111FS	1	27	98291	069-702-3499	6	82
81349	RNC60K56R2FS	8	35	28817	08-2220-1474	2	12
81349	RNC60K7870FS	9	8	28480	08620-20016		30
81349	RNC60K7872FS	8	24	28480	08640-00002	1:	36
81349	RNC60K8251FS	8	28	28480	08640-00006	8	55
81349	RNC70K1OR0FS	7	26	28480	08640-00008	8	67
81349	RNR60K1333FM	8	25	28480	08640-00009	3	48
81349	RNR60K4642FM	1	143	28480	08640-00011	2	11
81349	RNR70K51R1FM	7	21	28480	08640-00012	11	20
23880	SCM602-1HP	9	14	28480	08640-00013	11	31
04713	SM3197	7	18	28480	08640-00014	1	133
01295	SN16150	7	49	28480	08640-00015	1	121
04713	SP55103	7	17	28480	0864-00018	11	45
04713	SP55103	8	16	28480	08640-00021	1	135
98291	XL041762-9	8	70	28480	08640-00022	1	63
09353	Z11	1	41	28480	08640-00026	1	172

FSCM	PART NUMBER	FIGURE NO.	ITEM NO.	FSCM	PART NUMBER	FIGURE NO.	ITEM NO.
28480	08640-00029	6	100	28480	08640-40054	1	107
28480	08640-00030	1	93	28480	08640-40055	1	19
28480	08640-00037	1	177	28480	08640-40043	3	1b
28480	0864-00047	5	11	28480	08640-40047	1	140
28480	08640-00048	5	14	28480	08640-40048		
28480	08640-00049	5	13	28480	0864-60001	1	
28480	08640-00050	5	1b	28480	08640-60004	1	1386
28480	08640-00051	3	37	28480	08640-60005	1	89
28480	08640-00052	3	13	28480	08640-40007	1	90
28480	08640-00058	1	99	28480	08640-60011	11	15
28480	08640-00059	1	110	28480	08640-40014	11	14
28480	08640-00072	1	79	28480	08640-60016		44
28480	08640-00073	1	81	28480	08640-60018	11	131
28480	08640-00074	1	179	28480	08640-60019	1	147
28480	08640-00085	2	22	28480	08640-60022	5	17
28480	08640-00087	a	58	28480	08640-60024	2	21
28480	08640-00091	4	33	50440	08640-60028	3	24
28480	08640-00092	4	18	28480	08640-60029	1	149
28480	08640-00093	4	20	28480	08640-60037	2	15
28480	08640-00096	3	6	28480	08640-40043		35
28480	08640-00098	4	30	28480	08640-60099	11	154
28480	08640-00100	3	31	28480	08640-60103	i	109
28480	08640-00102	3	50	28480	08640-40105	1	94
28480	08640-00104	3	56	28480	08640-60106	6	81
28480	08640-00107	1	5	28480	08640-60119	1	80
28480	08640-00109	1	170	28480	08640-60124	1	
28480	08640-00115	1	169	28480	08640-60128	1	37
28480	08640-00116	i	178	28480	08640-60152	9	10
28480	08640-00138	1	69	28480	08640-60153	9	11
28480	08640-20057	1	50	28480	08640-60177	1	
28480	08640-20062	8	67	28480	08640-60180	1	927
28480	08640-20075	i	171	28480	08640-60185	a	52
28480	08640-20078	1	98	28480	08640-60191	3	25
28480	08640-20082	6	104	28480	08640-60192	1	144
28480	08640-20083	6	93	28480	08640-60196	2	79
28480	08640-20084	a	79	28480	08640-60204	5	15
28480	08640-20089	3	7	28480	08640-60206	2	23
28480	08640-20090	a	65	28480	08640-40300	1	56
28480	08640-20092	3	57	28480	08640-60303	1	119
28480	08640-20106	i	5	28480	08640-60304	1	57
28480	08640-20133	6	105	28480	08640-60307	4	31
28480	08640-20193	2	25	28480	08640-60308	4	25
28480	08640-20202	3	21	28480	08640-60309	1	
28480	08640-20203	3	51	28480	08640-60318	1	148
28480	08640-20204	1	183	28480	08640-60320	1	115
28480	08640-20205	a	69	28480	08640-60321	i	96
28480	08640-20206	6	88	28480	08640-60325	1	150
28480	08640-20211	9	19	28480	08640-60326	1	72
28480	08640-20214	6	96	28480	08640-60328	1	
28480	08640-2021a	8	80	28480	08640-60330	3	104
28480	08640-20224	2	14	28460	08640-40351	11	13
28480	08640-20228	1	157	28480	08640-60354	5	10
28480	08640-20241	4	28	28480	08640-60355	7	
28480	08640-20242	4	12	28480	08640-60357	3	44
28480	08640-20248	4	19	28480	08640-67002	11	37
28480	08640-20249	4	8	28480	08640-67003	11	43
28480	08640-20250	4	32	28480	08640-80002	7	45
28480	08640-20261	6	a7	28480	09 LOO-3372	6	65
28480	08640-20264	11	44	60131	1N3956		14
28480	08640-20268	5	1	01121	10M884-70	1	146
28480	08640-20269	5	9	06540	10100-322	6	56
28480	08640-20274	6	92	10103-21		6	55
28480	08640-20280	3	26	06560	10132-34	6	75
28480	08640-20281	3	4	06560	10175-22	4	49
28480	08640-20283	6	103	99800	1025-36	6	78
28480	08640-20285	1	2	13734	103204	4	16
28480	08640-20296	1	23	82389	11P1103	111	111
28480	08640-20296	a	75	28480	1120-0539	1	103
28480	08640-20297	3	30	98291	1190107000009	a	71
28480	08640-20312	1	14	20891	1228-4-1A	6	53
28480	08640-20355	4	26	28480	1250-0257	9	4
28480	08640-20363	1	124	28480	1250-0829	11	11
28480	08640-40003	3	17	28480	1250-1471	1	6
28480	oabco-40004	6	94	28480	1251-0600	7	46
28480	08640-40016	1	102	28480	1251-0600	a	i i
28480	08640-40041	3	2	28480	1251-0600	9	9
28480	08640-40044	1	12	28480	1251-2026	4	86
28480	08640-40046	1	1	71785	133-32-10-013	1	130
28480	08640-40047	i	24	28480	1430-0537	2	2
28480	08640-40052	1	4	28480	1430-0759	2	4

FSCM	PART NUMBER	FIGURE ITEM		FSCM	PART NUMBER	FIGURE ITEM	
		NO.	No.			NO.	NO.
28480	1430-0759	4	29	76530	322047	11	49
28480	1430-0763	8	77	32997	3329HT 22-202	9	6
28480	1430-0764	8	68	32991	3329HT 22-202	8	41
28480	1430-0772	4	13	32997	3329HT 22-501	8	39
28480	1430-0773	4	10	56289	360392F050AC2B	1	73
28480	1430-0774	4	15	56289	360392F0758B2B	1	76
28480	1460-0019	4	6	32997	3852ZX38-252A	4	21
28480	1480-0352	b	102	28480	4040-0 749	8	62
28480	1490-0030	1	182	28480	4040-0976	11	77
06560	15-4415-1M	3	47	82389	410C507	11	40
06560	15-4415-1M	7	11	28480	4420-10480-1	11	168
06560	15-4425-7K	7	13	06560	4425-3K	3	44
56289	1500226X901582	8	11	56289	5C1187S	6	49
56289	1500227X901052	9	1	98291	50-051-0109	6	52
0211 1	152-45	2	6	28480	5000-0051	11	176
99800	1537-08	7	12	28480	5000-8705	1	163
99800	1537-38	11	27	28480	5000-8 707	1	162
99800	1537-58	7	16	28480	5000-8711	1	175
80009	156-0067-04	7	47	28480	5001-0135	i	116
80009	156-0205-00	7	50	16733	500222	3	38
28480	1820-0753	7	51	28480	5020-3440	9	17
28480	1820-0982	7	53	28480	5021-0106	11	7
28480	1820-1003	3	33	20480	5021-0855	3	11
28480	1820-1354	7	55	28480	5040-0 170	1	71
2.5480	1820-2412	7	54	28480	5040-0 388	1	13
13499	183-1278-450	1	74	28480	5040-0389	1	28
28480	1853-0020	8	20	28480	5040-0390	1	27
28480	1853-0276	8	17	28480	5040-0391	3	14
28480	1853 0326	7	20	28480	5040-0392	3	15
20480	1854-0003	8	19	28480	5040-0393	3	16
28480	1854 0250	1	48	28480	5040-0447	1	32
28480	1855-0062	8	21	28480	5040-6945	3	53
28480	1902-3059	8	48	28480	5040-6946	3	55
78189	1914-05-00	3	11	28480	5040-6947	3	54
70189	1920-02	8	73	28480	5060-0109	1	100
28480	1990-0330	3	3	28480	5060-0 109	9	15
8013 11	2N3904	8	18	28480	5060-0222	11	166
07700	20-90044	2	18	28480	5060-0767	1	180
02768	201-080551-01 08	3	5	28480	5060-8737	i	165
28480	2100-1984	7	25	28480	5080-1718	8	46
2.5480	2190-0368	8	72	28480	50864282	2	8
28480	2200-0105	6	90	79136	5100-25SMD25STCD	4	1
28480	2200-0127	5	4	79136	5113 18-SMDR	8	51
28480	2200-0129	5	3	79136	5133-12SMDR	2	26
28480	2200-0704	3	32	79136	5133-12SMDR	4	27
73734	23021	5	12	79136	5133-12SMDR	6	89
73734	23021	6	95	72982	538-011A2-8	6	47
59660	2499-003U2M560M	11	28	56289	562CX5EFB251AG10	7	2
72982	2499-003X5F101M	11	22	86928	5624-16-10	3	35
72982	2499008X5V0-5027	3	43	97384	57988-90047	7	48
72902	2499008X5V0-5027	11	26	28480	606A-34C-6	1	159
28480	2510-0194	1	141	76854	67250-121	1	10
71785	252-12-30-032	10	11	01121	7084M116S103M	2	7
71785	252-15-30-300	6	85	97464	7100-12CD	2	1
71785	252-1 5-30-300	9	13	97464	7100-12CD	4	14
37695	26501 1-5	6	48	28460	7120-4294	1	138
2493 1	28PC 107-1	11	4	28480	7120-7032	1	45
73743	28200-10-101	1	39	13103	7717-86DAP	8	49
73743	28200-10-101	8	74	28480	8120-0580	1	123
28480	2950-0035	11	5	28480	8120-0581	11	122
04870	31M80795	11	31	28480	8120-1593	11	137
98291	3002-18	3	39	28480	8120-1831	b	84
98291	3002-18	11	18	28480	8120-1832	6	83
72982	301-000C0G0-220J	6	40	28480	8120-1887	11	33
12982	301-000C0G0-240J	6	42	28480	8120-1889	11	34
72982	301-000C0K0-109C	8	12	28480	8120-1892	11	12
72982	301NP 013PFJ	6	43	28480	8120-2966	7	63
28480	3030-0021	1	158	24226	8123-2	6	74
28480	3030-0343	1	125	24226	8123-3	b	77
28480	3050-0029	8	50	28480	8160-0218	11	21
28480	3050-0032	8	78	28480	8160-0219	3	49
28480	3050-0066	11	40	28480	8160-0220	3	28
28480	3050-0103	4	5	28480	8160-0222	11	30
28480	3050-0105	11	85	28480	8 MO-0223	11	29
28480	3050-0109	2	14	28480	8160-0224	11	1
28480	3101-1395	1	145	28480	8160-0245	1	152
75915	3121-25	1	43	28480	8160-0276	1	160
28480	3130-0503	4	38	18876	8175120	3	41
28480	3130-0504	4	35	18876	8 175120	4	23
28480	3150-0203	1	47	02768	8511-28-00-9909	1	117

FSCM	PART NUMBER	FIGURE NO.	ITEM NO.	FSCM	PART NUMBER	FIGURE NO.	ITEM NO.
00779	859554-5	3	45	28480	9100-3368	6	63
00779	859554-5	6	51	28480	<b>9100-3369</b>	6	61
95354	91-6915-0702-00	9	12	28480	<b>9100-3370</b>	6	62
28480	9100-3355	6	72	28480	9100-3371	6	<b>71</b>
28480	9100-3356	6	73	28480	9100-3373	6	66
28480	9100-3359	6	67	28480	9100-3374	6	59
28480	9100-3360	6	68	28480	9100-3375	6	54
28480	<b>9100-3362</b>	6	57	28480	<b>9100-3512</b>	6	<b>76</b>
28480	<b>9100-3363</b>	6	60	28480	<b>9100-4024</b>	1	66
28480	<b>9100-3364</b>	6	58	50440	<b>9100-4078</b>	6	79
28480	<b>9100-3367</b>	<b>6</b>	64	72962	<b>99-012-062-0250</b>	8	63





RECOMMENDED CHANGES TO EQUIPMENT TECHNICAL PUBLICATIONS



THEN... JOT DOWN THE DOPE ABOUT IT ON THIS FORM. CAREFULLY TEAR IT OUT, FOLD IT AND DROP IT IN THE MAIL!

SOMETHING WRONG WITH THIS PUBLICATION?

FROM (PRINT YOUR UNIT'S COMPLETE ADDRESS)  
 Commander  
 Stateside Army Depot  
 ATTN: AMSTA-US  
 Stateside, N.J. 07703

DATE SENT  
 10 July 1975

PUBLICATION NUMBER  
 TM 11-5840-340-20P

PUBLICATION DATE  
 23 Jan 78

PUBLICATION TITLE  
 Radar Set AN/PRC-76

BE EXACT PIN-POINT WHERE IT IS

PAGE NO	PARA-GRAPH	FIGURE NO	TABLE NO
33			
44		19	
45			

IN THIS SPACE TELL WHAT IS WRONG AND WHAT SHOULD BE DONE ABOUT IT:

For item 2, change the NSN to read: 5835-00-134-9186.  
 Reason: Accuracy.

Identify the cover on the junction box (item no. 5).  
 Reason: It is a separate item and is not called out on figure 19.

Add the cover of the junction box as an item in the listing for figure 19.  
 Reason: Same as above

A M P L E

TEAR ALONG PERFORATED LINE

PRINTED NAME GRADE OR TITLE AND TELEPHONE NUMBER  
 SSG I. M. DeSpirit of 999-1776

SIGN HERE

FILL IN YOUR  
UNIT'S ADDRESS

FOLD BACK

DEPARTMENT OF THE ARMY

\_\_\_\_\_  
\_\_\_\_\_

POSTAGE AND FEES PAID  
DEPARTMENT OF THE ARMY  
DOD 114

OFFICIAL BUSINESS  
PENALTY FOR PRIVATE USE \$300

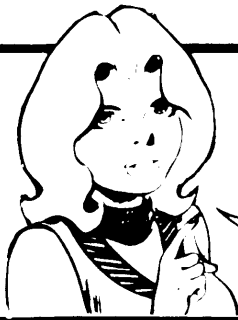


ADLE

TEAR ALONG PERFORATED LINE

RECOMMENDED CHANGES TO EQUIPMENT TECHNICAL PUBLICATIONS

# SOMETHING WRONG WITH THIS PUBLICATION?



THEN...JOT DOWN THE DOPE ABOUT IT ON THIS FORM. CAREFULLY TEAR IT OUT, FOLD IT AND DROP IT IN THE MAIL.

FROM: (PRINT YOUR UNIT'S COMPLETE ADDRESS)

DATE SENT

PUBLICATION NUMBER

TM 11-6625-2780-24p-1

PUBLICATION DATE

7 Nov. 83

PUBLICATION TITLE

Signal Generator SG-1112(V)2/U

BE EXACT PIN-POINT WHERE IT IS

PAGE NO.

PARA-GRAPH

FIGURE NO.

TABLE NO.

IN THIS SPACE TELL WHAT IS WRONG AND WHAT SHOULD BE DONE ABOUT IT:

TEAR ALONG DASHED LINE

PRINTED NAME GRADE OR TITLE AND TELEPHONE NUMBER

SIGN HERE

FILL IN YOUR  
UNIT'S ADDRESS

FOLD BACK

TEAR ALONG

DEPARTMENT OF THE ARMY

\_\_\_\_\_  
\_\_\_\_\_

OFFICIAL BUSINESS  
PENALTY FOR PRIVATE USE \$300

POSTAGE AND FEES PAID  
DEPARTMENT OF THE ARMY  
DOD 314



CRATED LINE

Commander  
US Army Communications-Electronics Command  
and Fort Monmouth  
ATTN: DRSEL-ME-MP  
Fort Monmouth, New Jersey 07703

RECOMMENDED CHANGES TO EQUIPMENT TECHNICAL PUBLICATIONS



**SOMETHING WRONG WITH THIS PUBLICATION?**

*THEN...JOT DOWN THE DOPE ABOUT IT ON THIS FORM. CAREFULLY TEAR IT OUT, FOLD IT AND DROP IT IN THE MAIL.*

FROM: (PRINT YOUR UNIT'S COMPLETE ADDRESS)

DATE SENT

PUBLICATION NUMBER

TM 11-6625-2780-24P-1

PUBLICATION DATE

7 Nov. 83

PUBLICATION TITLE

Signal Generator SG-1112(V)2/U

BE EXACT PIN-POINT WHERE IT IS

PAGE NO.	PARA-GRAPH	FIGURE NO.	TABLE NO.

**IN THIS SPACE TELL WHAT IS WRONG AND WHAT SHOULD BE DONE ABOUT IT:**

TEAR ALONG PERFORATED LINE

PRINTED NAME GRADE OR TITLE AND TELEPHONE NUMBER

SIGN HERE

FILL IN YOUR  
UNIT'S ADDRESS

FOLD BACK

DEPARTMENT OF THE ARMY

---

---

OFFICIAL BUSINESS  
PENALTY FOR PRIVATE USE \$300

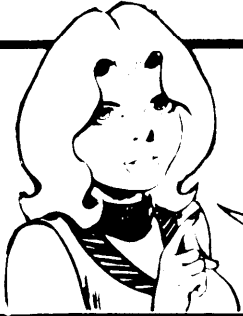
POSTAGE AND FEES PAID  
DEPARTMENT OF THE ARMY  
DOD 314



TEAR ALONG PERFORATED LINE

Commander  
US Army Communications-Electronics Command  
and Fort Monmouth  
ATTN: DRSEL-ME-MP  
Fort Monmouth, New Jersey 07703

RECOMMENDED CHANGES TO EQUIPMENT TECHNICAL PUBLICATIONS



THEN...JOT DOWN THE DOPE ABOUT IT ON THIS FORM. CAREFULLY TEAR IT OUT, FOLD IT AND DROP IT IN THE MAIL.

**SOMETHING WRONG WITH THIS PUBLICATION?**

FROM: (PRINT YOUR UNIT'S COMPLETE ADDRESS)

DATE SENT

PUBLICATION NUMBER

TM 11-6625-2780-24P-1

PUBLICATION DATE

7 Nov. 83

PUBLICATION TITLE

Signal Generator SG-1112(V)2/U

BE EXACT PIN-POINT WHERE IT IS

PAGE NO.

PARA-GRAPH

FIGURE NO.

TABLE NO.

IN THIS SPACE TELL WHAT IS WRONG AND WHAT SHOULD BE DONE ABOUT IT:

TEAR ALONG PERFORATED LINE

PRINTED NAME GRADE OR TITLE AND TELEPHONE NUMBER

SIGN HERE

DA FORM 2028-2  
1 JUL 79

PREVIOUS EDITIONS  
ARE OBSOLETE

P.S.--IF YOUR OUTFIT WANTS TO KNOW ABOUT YOUR RECOMMENDATION MAKE A CARBON COPE OF THIS AND GIVE IT TO YOUR HEADQUARTERS.

FILL IN YOUR  
UNIT'S ADDRESS

FOLD BACK

DEPARTMENT OF THE ARMY

\_\_\_\_\_  
\_\_\_\_\_

OFFICIAL BUSINESS  
PENALTY FOR PRIVATE USE \$300

POSTAGE AND FEES PAID  
DEPARTMENT OF THE ARMY  
DOD 314



TEAR ALONG PERFORATED LINE

Commander  
US Army Communications-Electronics Command  
and Fort Monmouth  
ATTN: DRSEL-ME-MP  
Fort Monmouth, New Jersey 07703



By Order of the Secretary of the Army:

JOHN A. WICKMAN JR.  
*General, United States Army*  
*Chief of Staff*

Official:

ROBERT M. JOYCE  
*Major General United States Army*  
*The Adjutant General*

DISTRIBUTION:

To be distributed in accordance with DA Form 12-36B, Organizational Maintenance requirements for SG-1112(V)/U.

☆ U.S. GOVERNMENT PRINTING OFFICE : 1990 O - 262-912 (30493)

---





**PIN :054357-000**